

# GCPS FACILITIES ASSESSMENT



- Surveyed Each School Site's Buildings, Finishes, & Systems
- Analyzed **Enrollment** Data & Future **Growth**;  
Identified Program Deficiencies, Capacity Needs & Project Options
- Completed existing **energy usage** analysis;  
Established EUI for all existing facilities
- Studied **MS/HS cafeteria** + media center capacity issues
- Met with maintenance, food service, + transportation staff to  
understand how various **school operations** might be affected by  
future projects



VMDO

02 Aug 2016

**PEOPLE + PROGRAMS**

Our Client's Client

# GROWTH + CAPACITY ASSESSMENT



## GCPS Growth

2005-2015



2010-2015



## PROJECTIONS Weldon Cooper



2015-2018

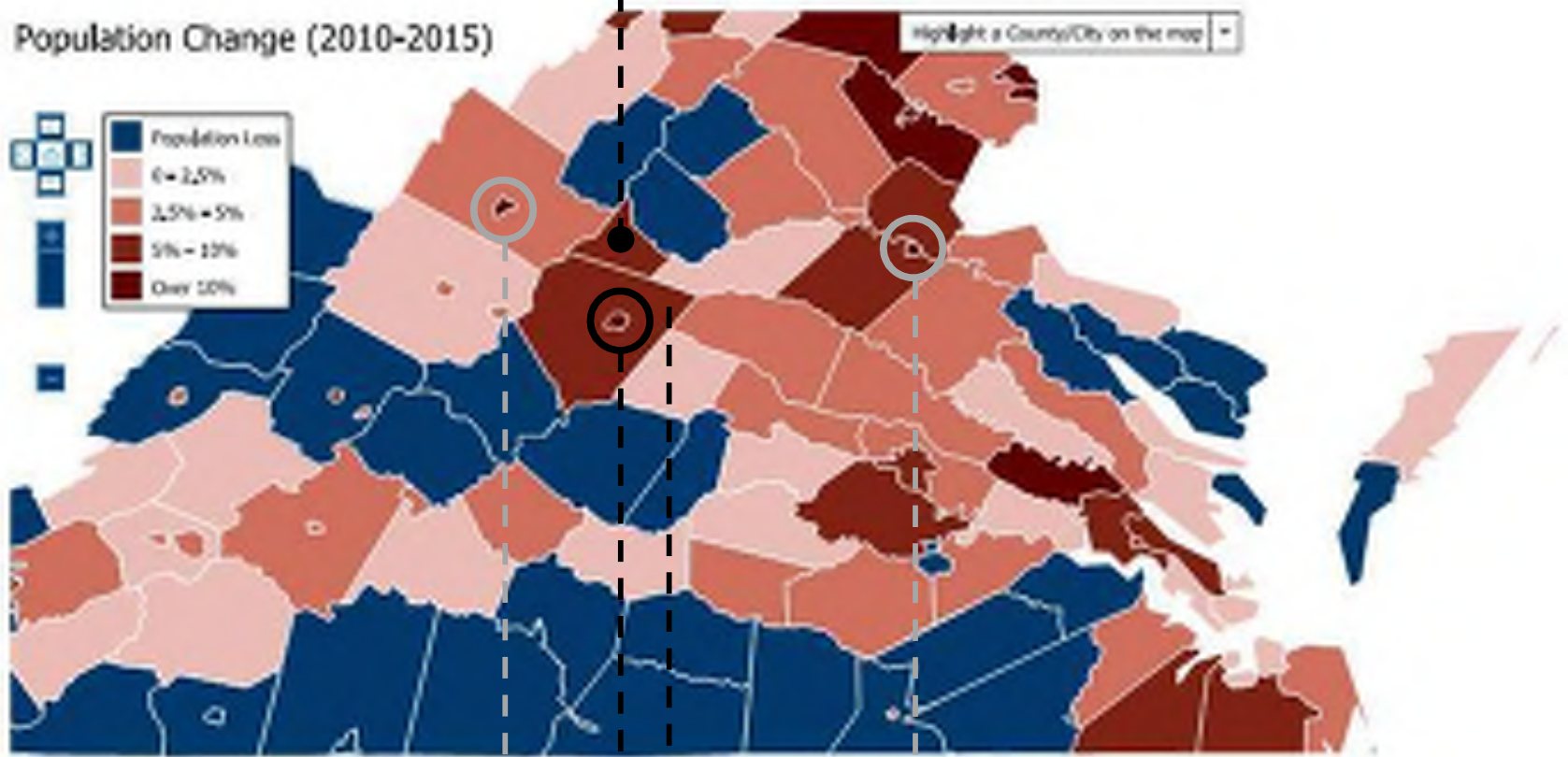
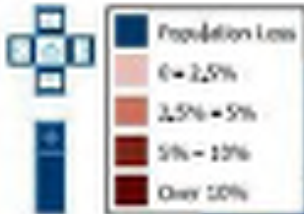
## VA Employment Commission



**Greene County**  
(7.8%)

**Population Change (2010-2015)**

Highlight a County/City on the map



**Harrisonburg**  
(10.1%)

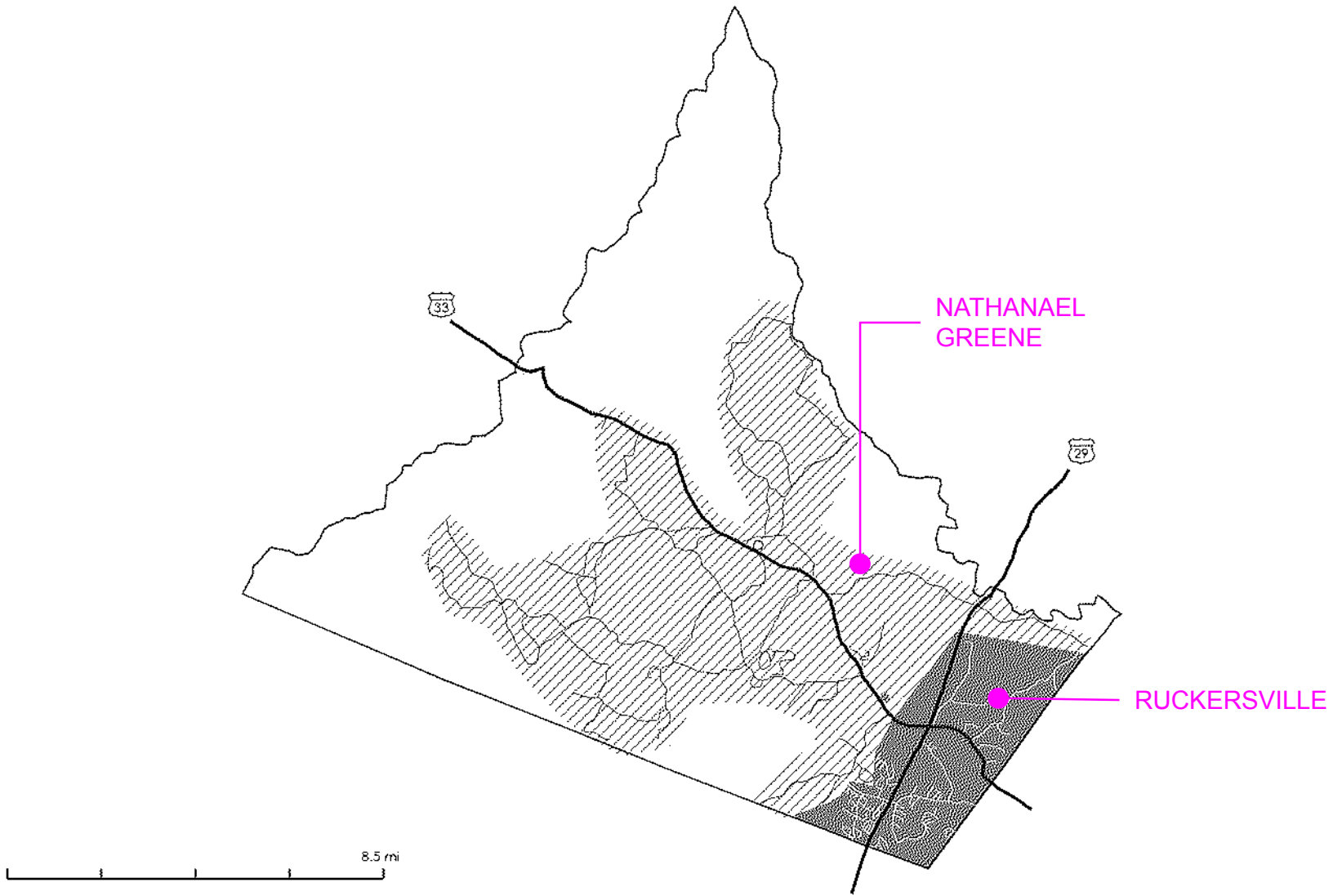
**Fredericksburg**  
(11%)

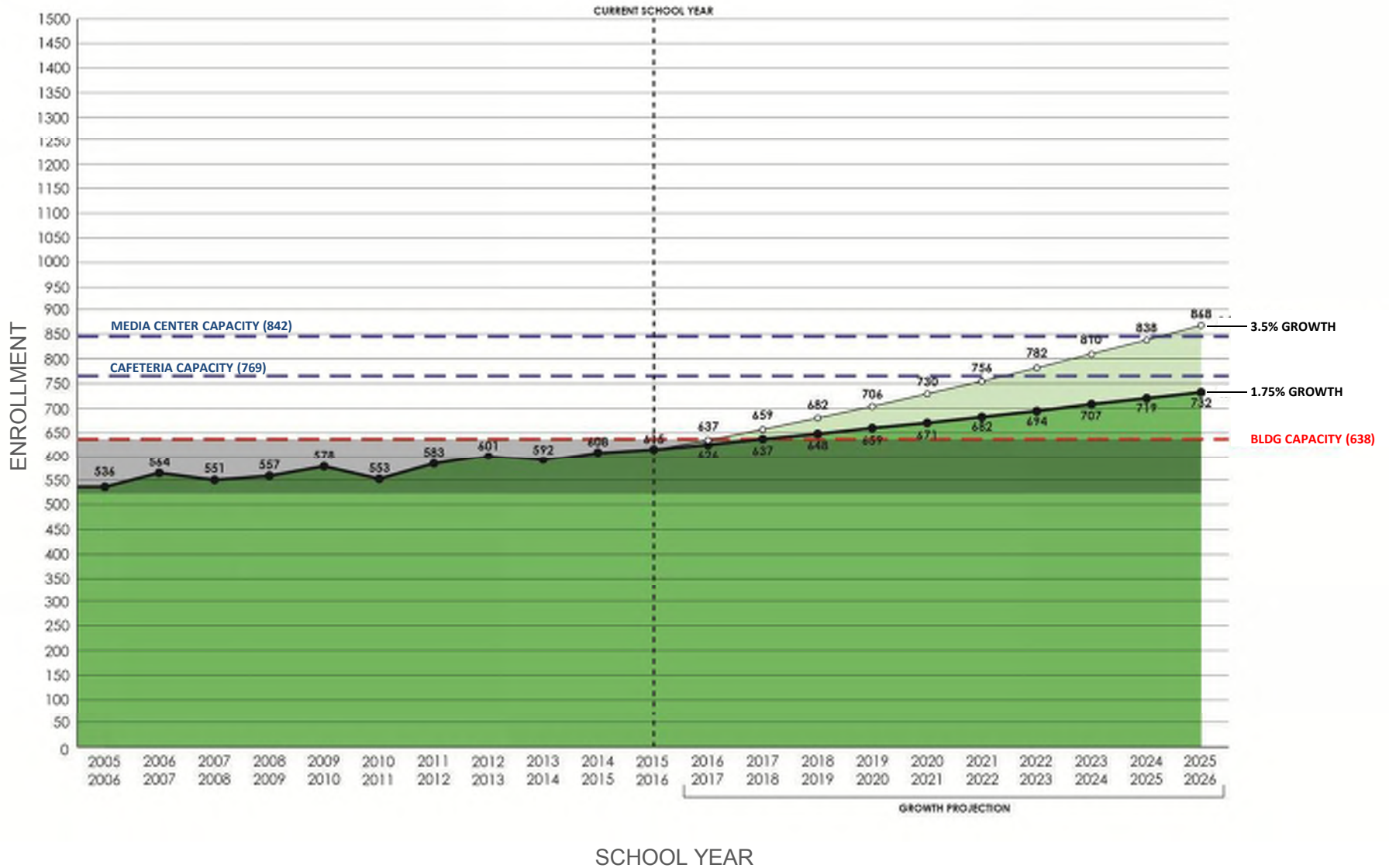
**Charlottesville**  
(10.8%)

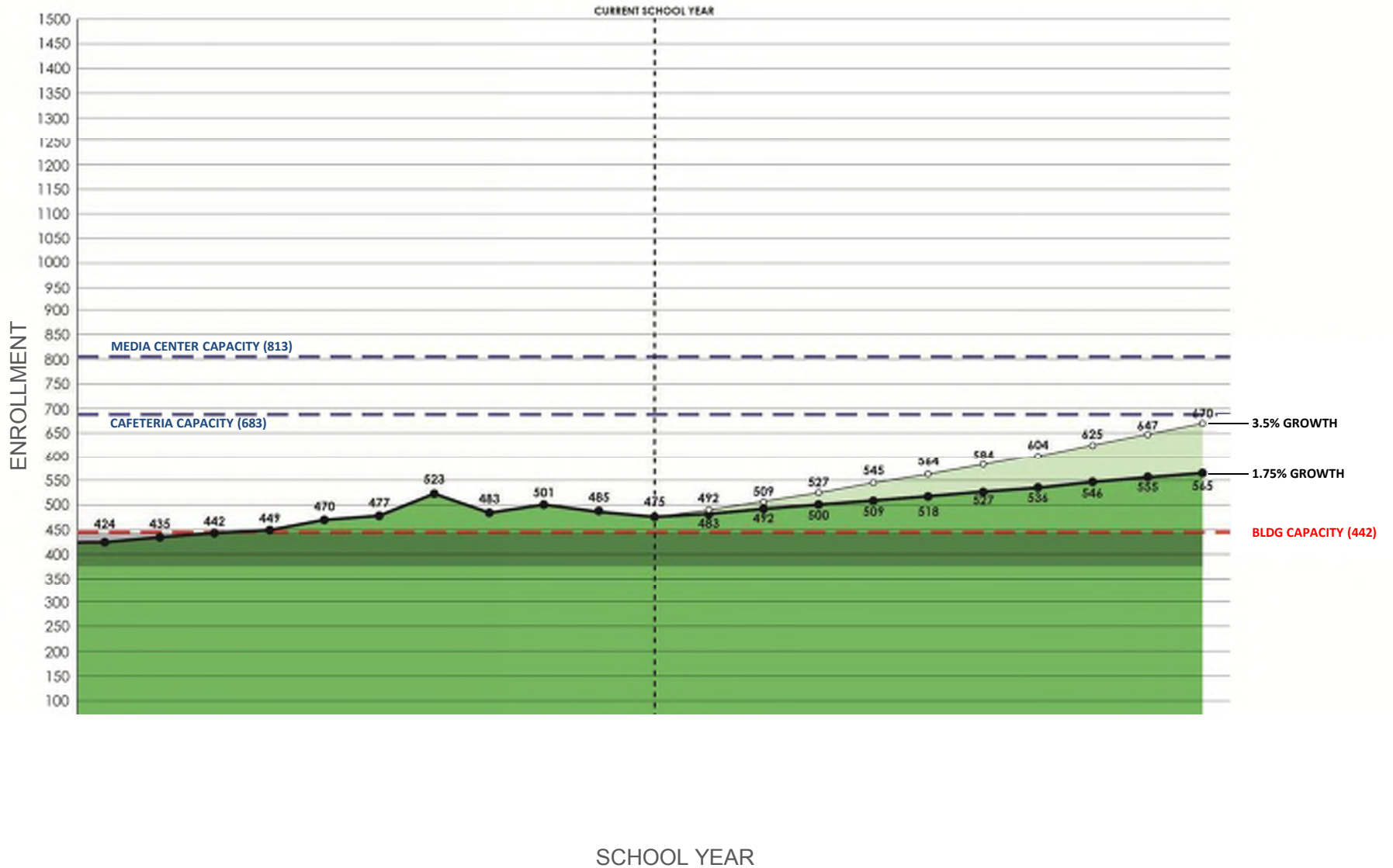
**Albemarle Co**  
(6%)

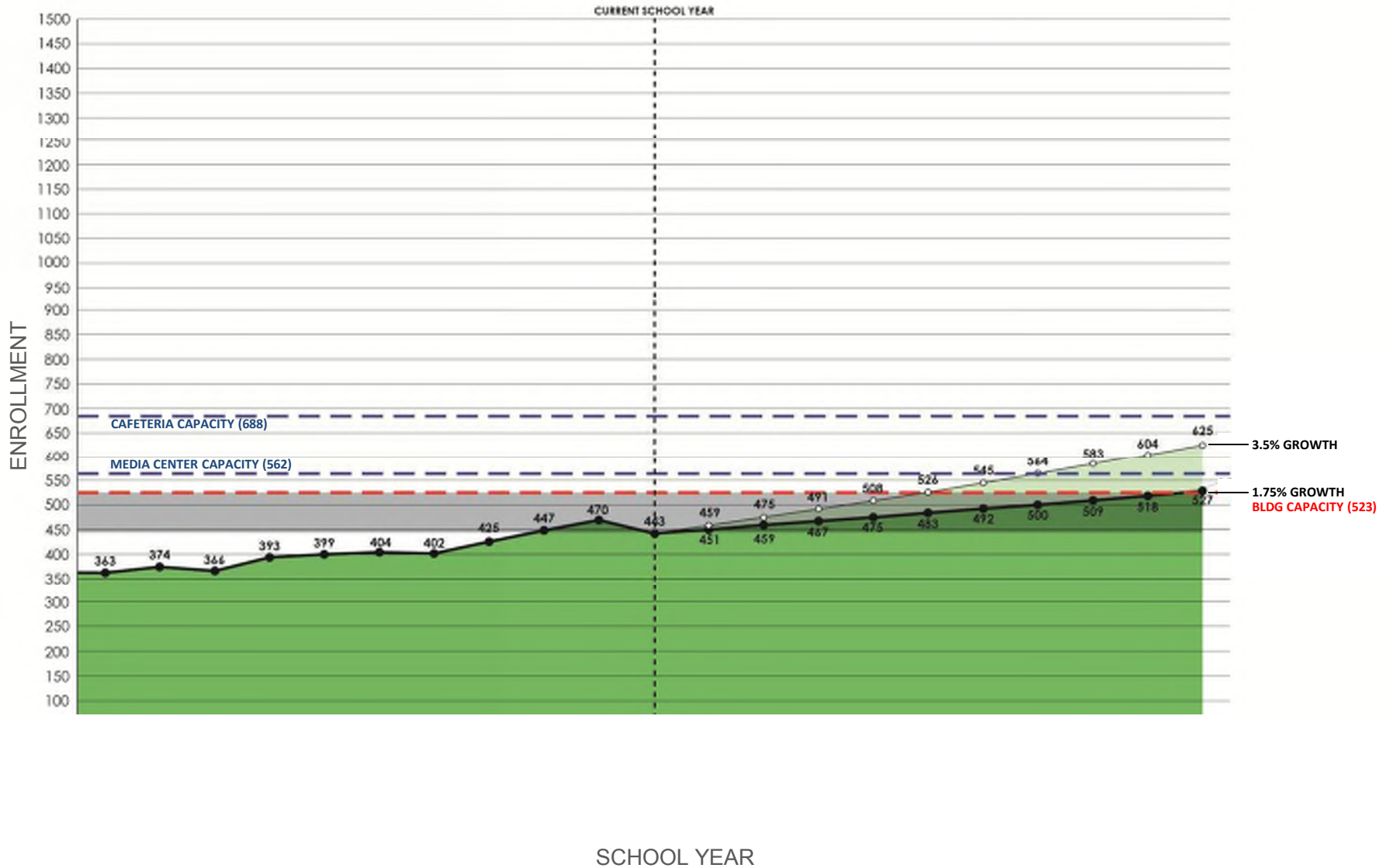
- **Proximity to:**
  - Albemarle Co.**
  - Charlottesville**
  - Harrisonburg (to some degree)**
- **Development-ready land along US-29**
- **Recent Development**
  - N.G.I.C.**
  - Highway Safety Crash Center**
  - New/expanded Retail + Housing**

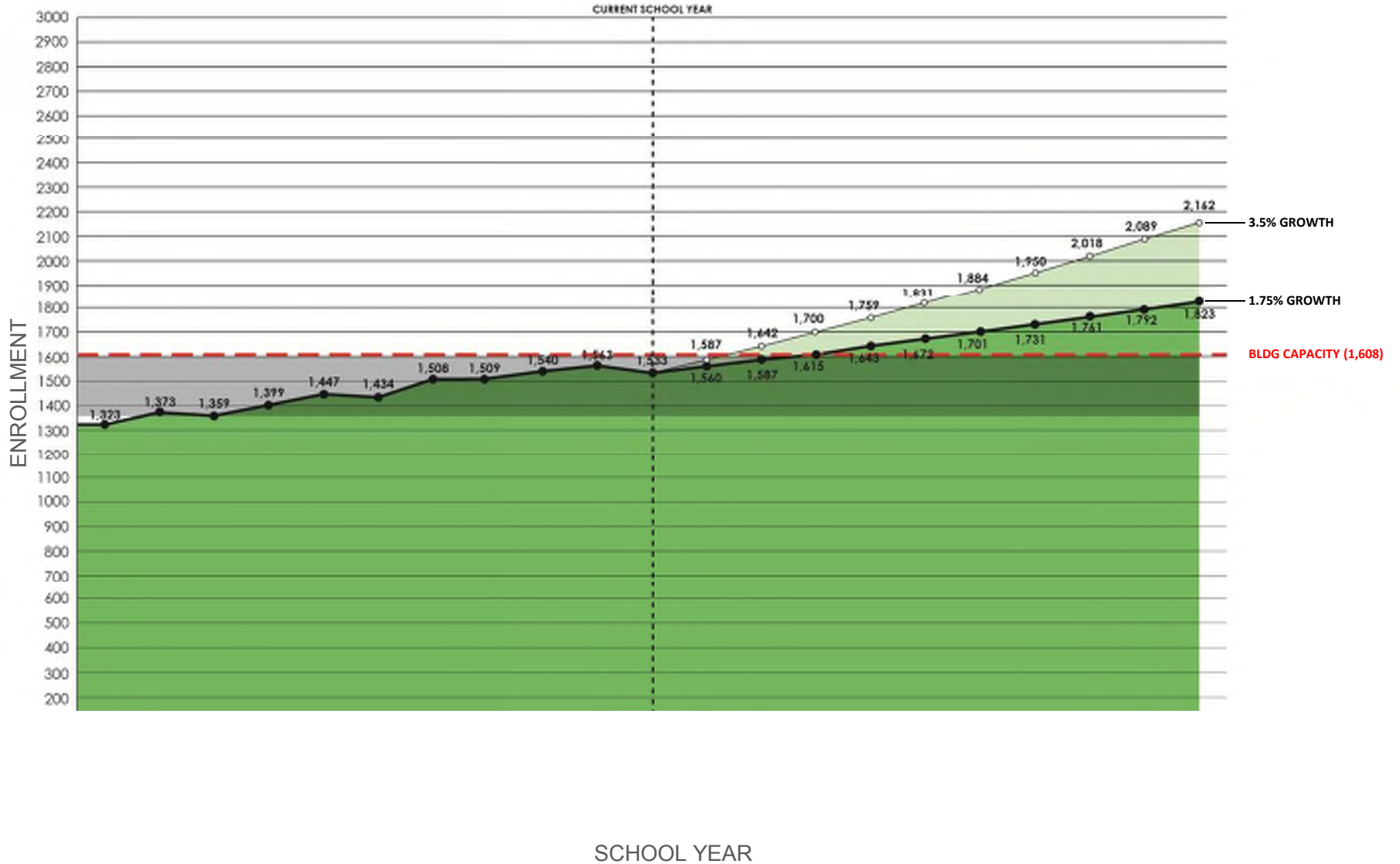


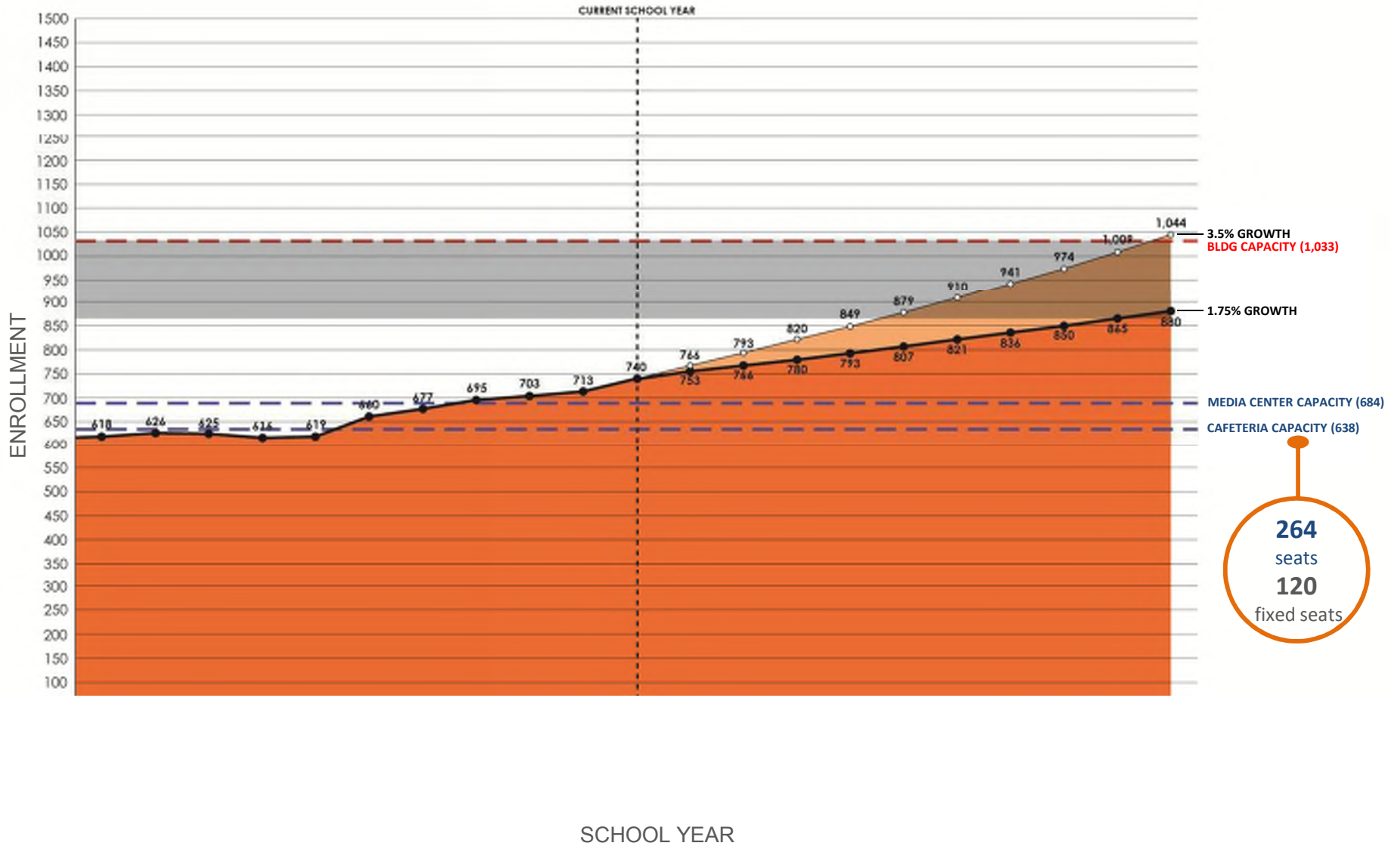


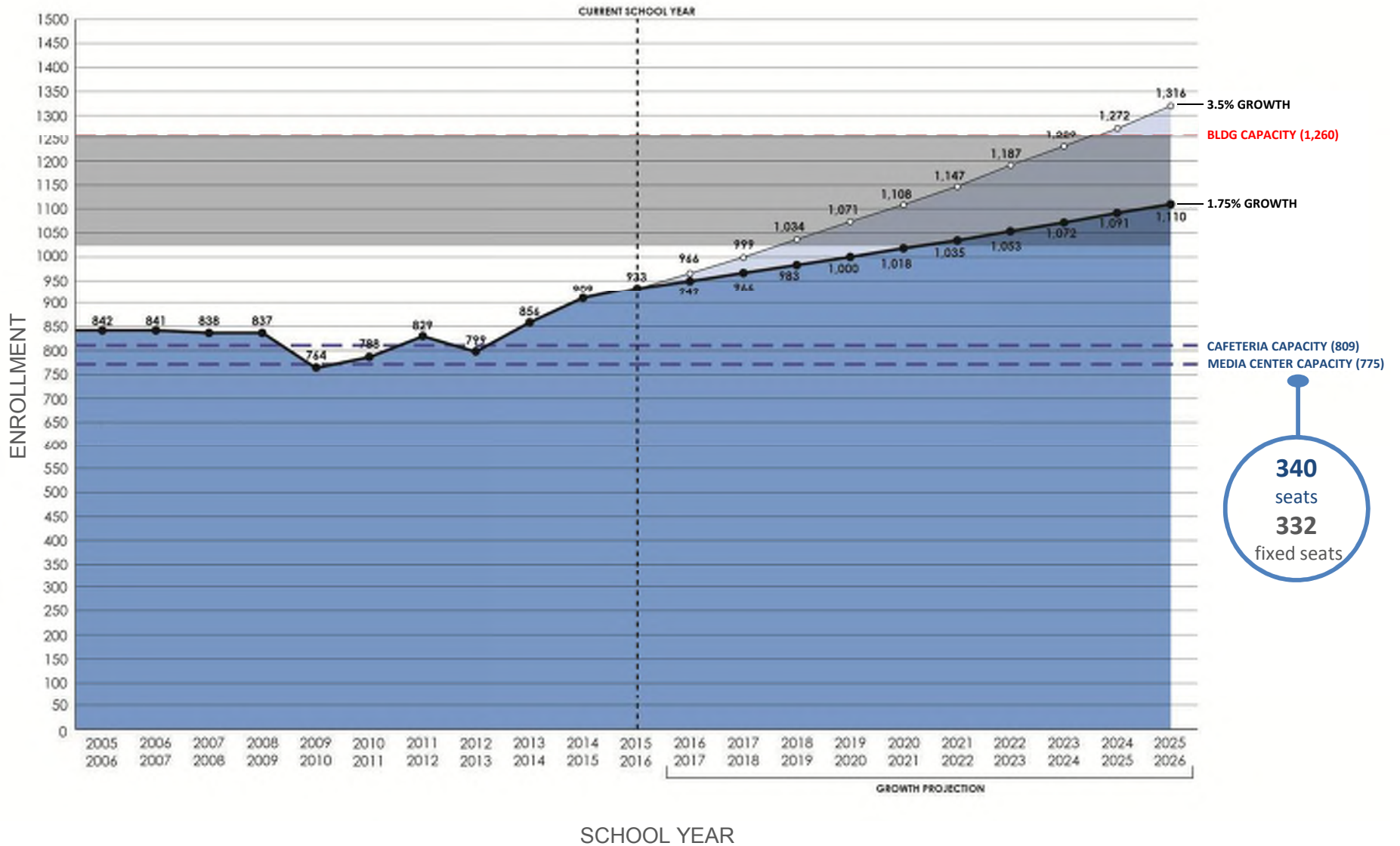












# QUALITY ASSESSMENT





## State Averages – New Construction

	Elementary	Middle	High
2009-2010	125	134	
2010-2011	123		164
2011-2012	111		175
2012-2013	124	168	166
2013-2014	129		158
2014-2015	109		183
2015-16	111	151	
<b>Avg (sf)</b>	<b>119</b>	<b>151</b>	<b>169</b>

## State Averages – New Construction

	Elementary	Middle	High
2009-2010	125	134	
2010-2011	123		164
2011-2012	111		175
2012-2013	124	168	166
2013-2014	129		158
2014-2015	109		183
2015-16	111	151	
<b>Avg (sf)</b>	<b>119</b>	<b>151</b>	<b>169</b>

## Elementary

	GSF	VDOE Capacity	SF/Pupil
NG Primary	47,500	440	<b>108</b>
NG Elem	50,424	526	<b>96</b>
Ruckersville	67,460	632	<b>107</b>
<b>Average</b>			<b>103</b>

## Middle

	GSF	VDOE Capacity	SF/Pupil
W. Monroe	92,504	1,033	<b>90</b>

## High

	GSF	VDOE Capacity	SF/Pupil
W. Monroe	142,972	1,260	<b>113</b>

# ENERGY EFFICIENCY + OPERATING COSTS



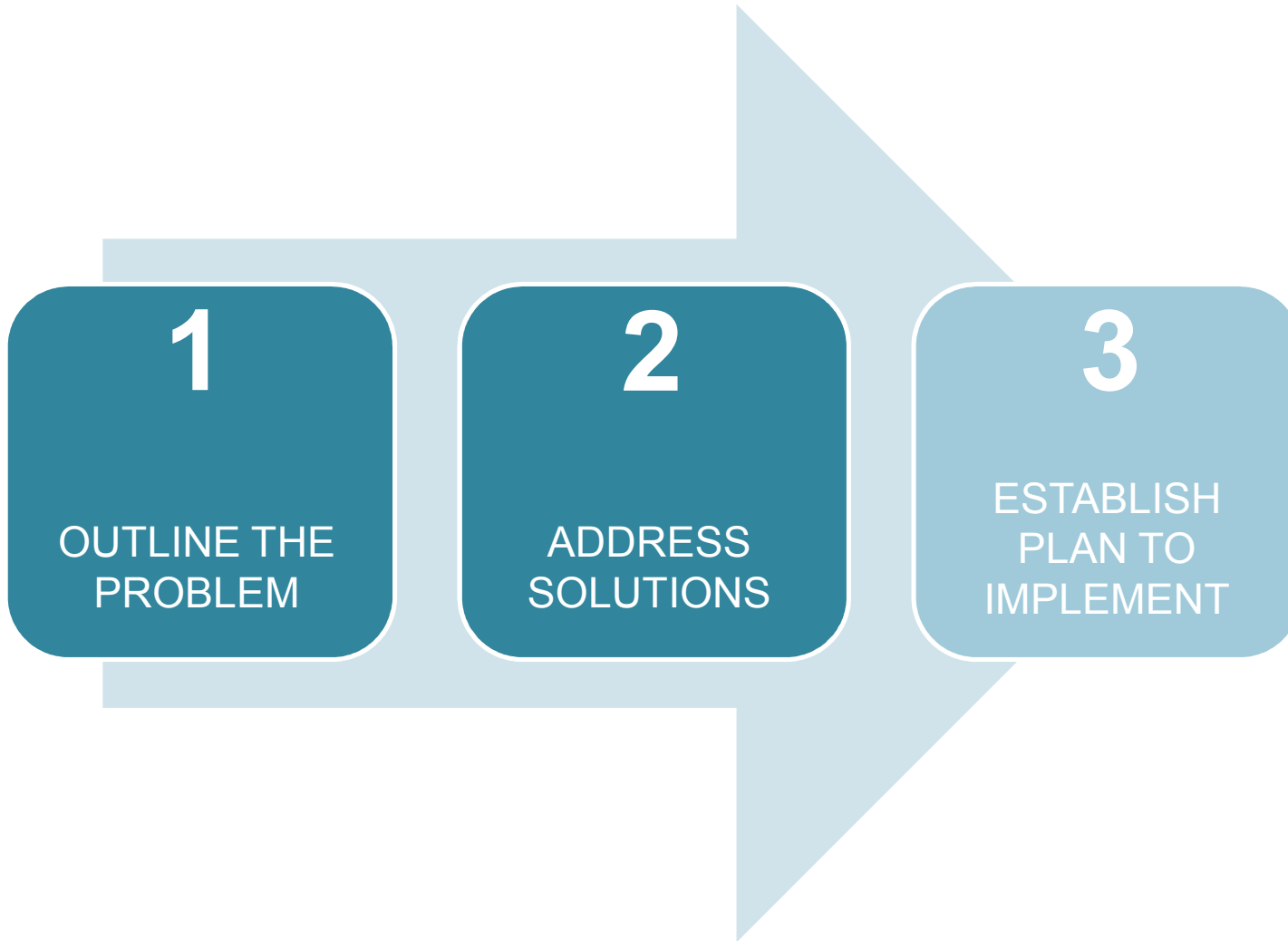


K–12 **energy costs** are second only to **personnel costs** as the leading draw on school district operating budgets.

Each **energy unit** reduction saved in design + construction results in **continuous** monthly savings in operation over the life of the building.

# ANALYSIS





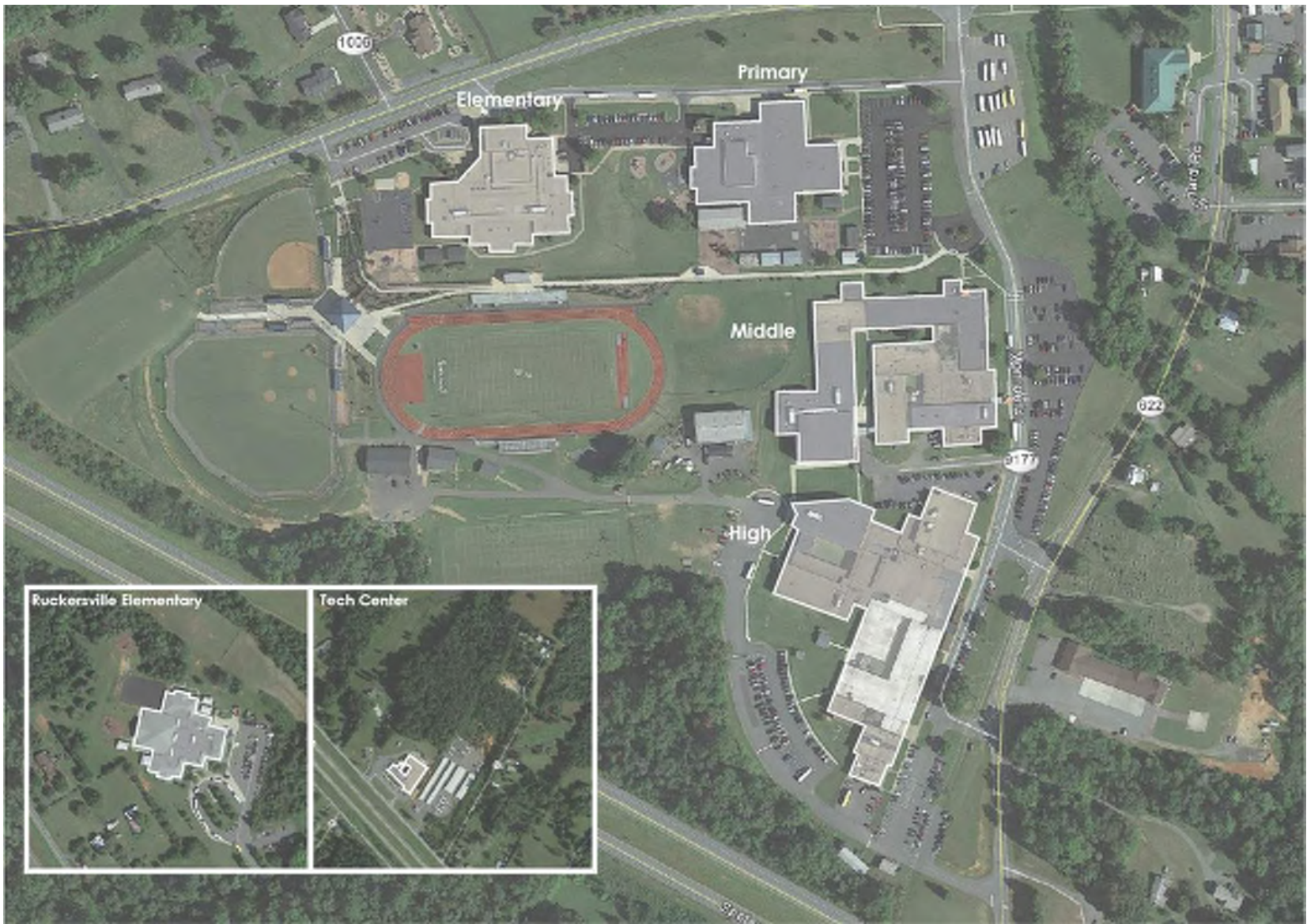
- Every school approaching or over **CAPACITY**
- Every school lacking **QUALITATIVE PROGRAM** to support education
- Middle School + High School **KITCHEN + DINING** spaces insufficient for current and growing enrollment
- Every school has **TRAFFIC + PARKING** issues

- **Solutions to address:**
  - growth + capacity issues
  - incremental school-specific program needs
  - Building Identity
  - Big picture solutions that address multiple issues, in hopes of achieving some efficiencies/synergies
  - Safety + accessibility
- **Deeper analysis + study of MS + HS dining needs**
  - incremental projects at each school
  - looking for other spaces in the buildings that could serve as dining space (and provide other benefits at other times)
  - more radical solutions (i.e. centralized kitchen)
- **New Elementary School**
  - Likely first required big move to provide capacity relief



# SITE OPTIONS



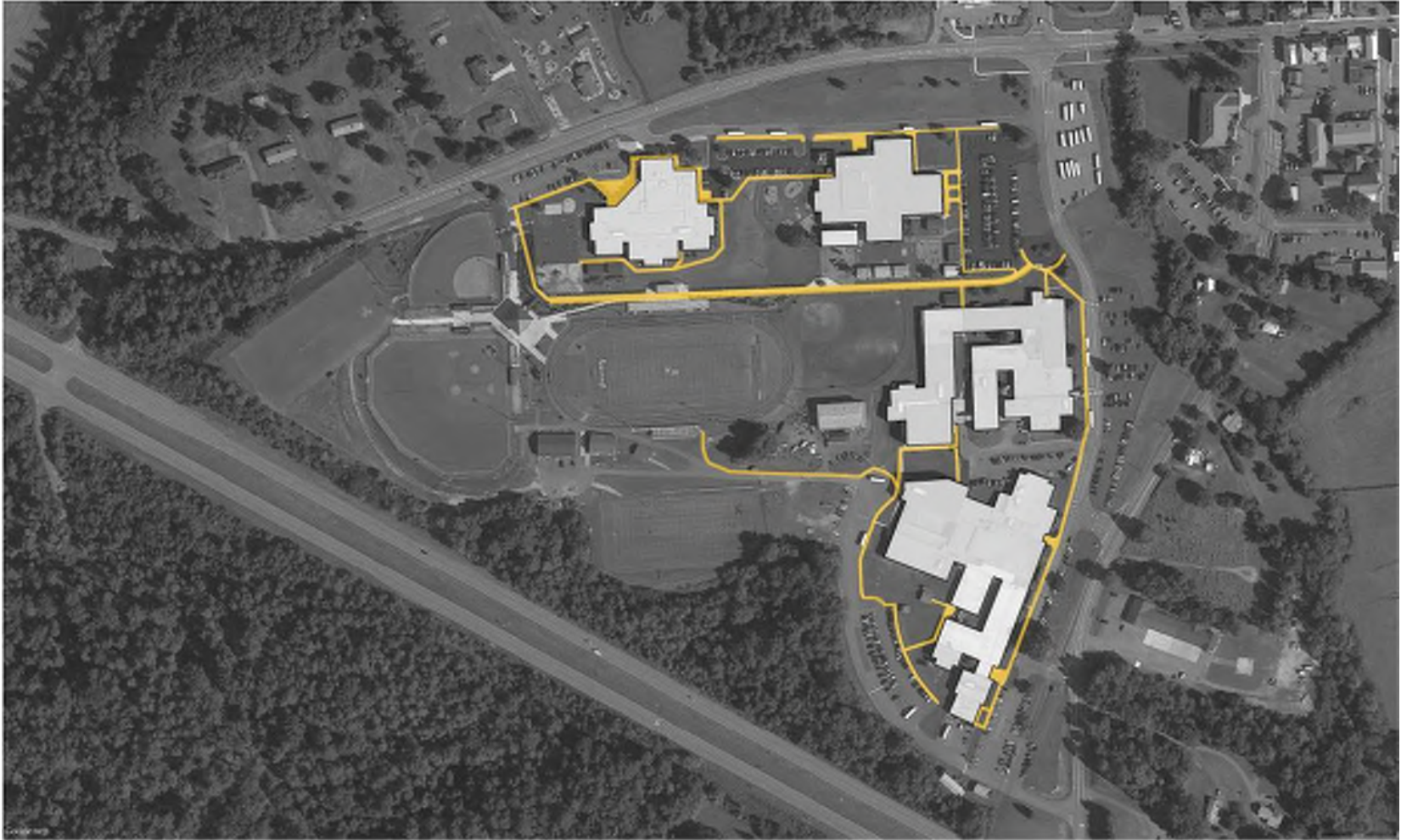


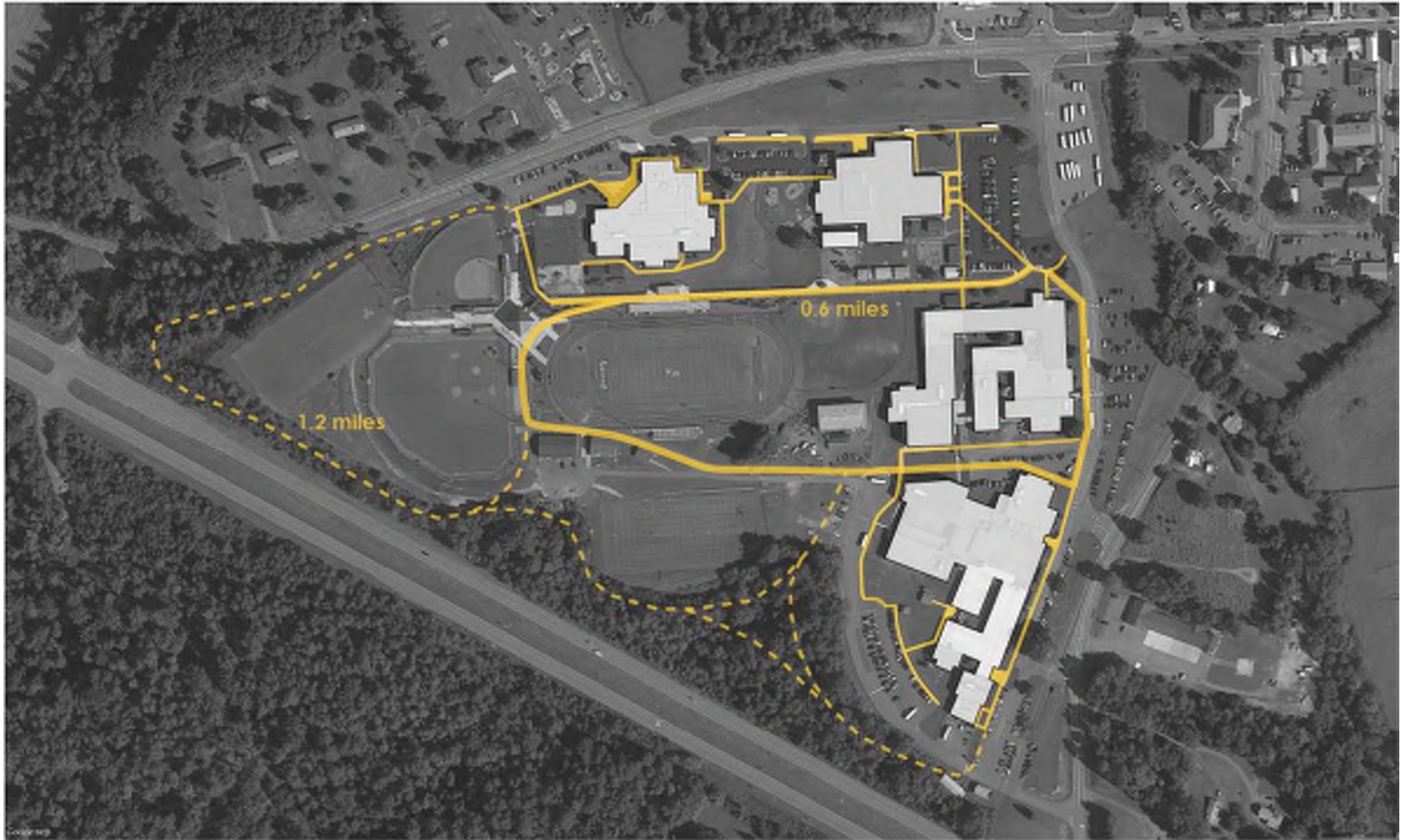




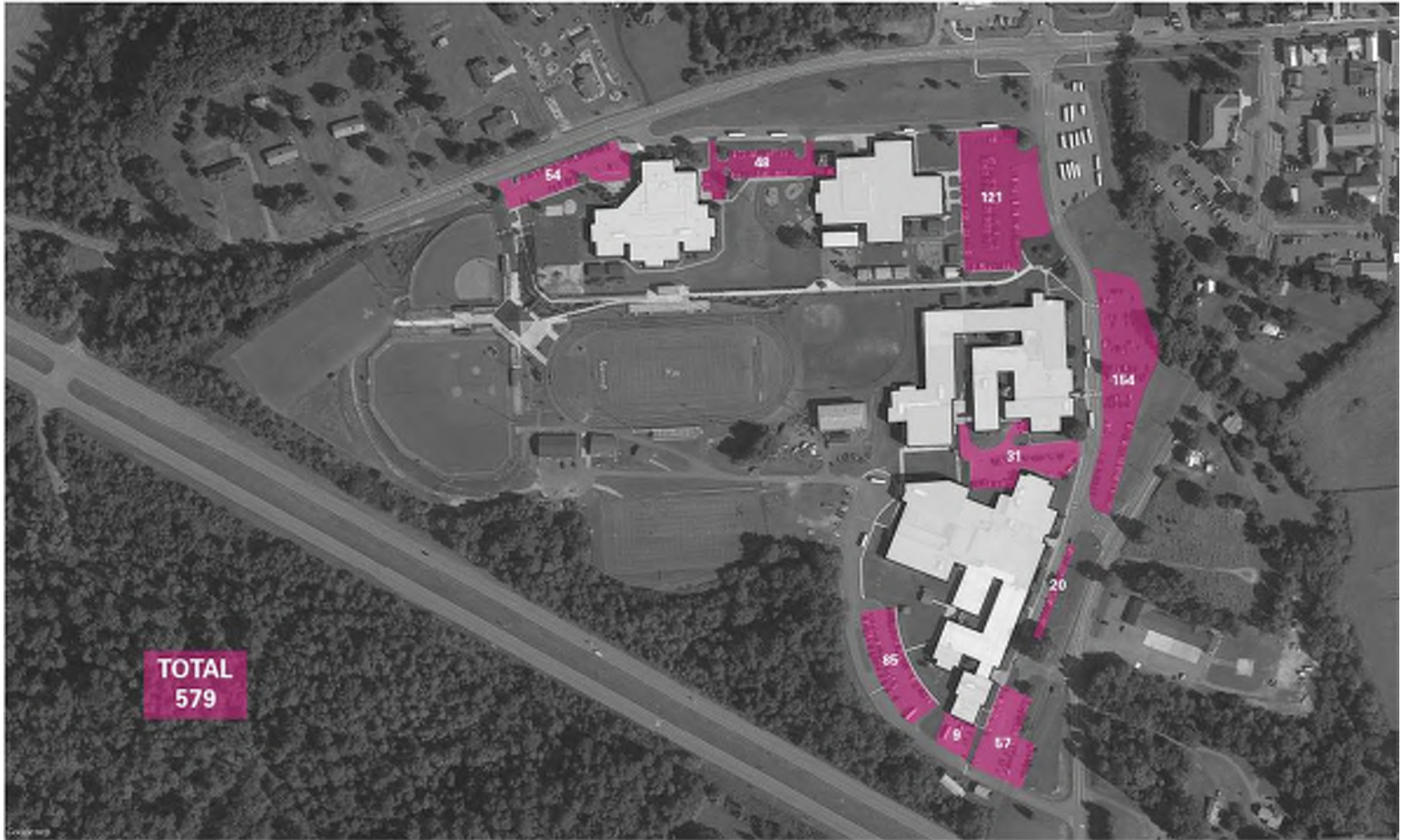


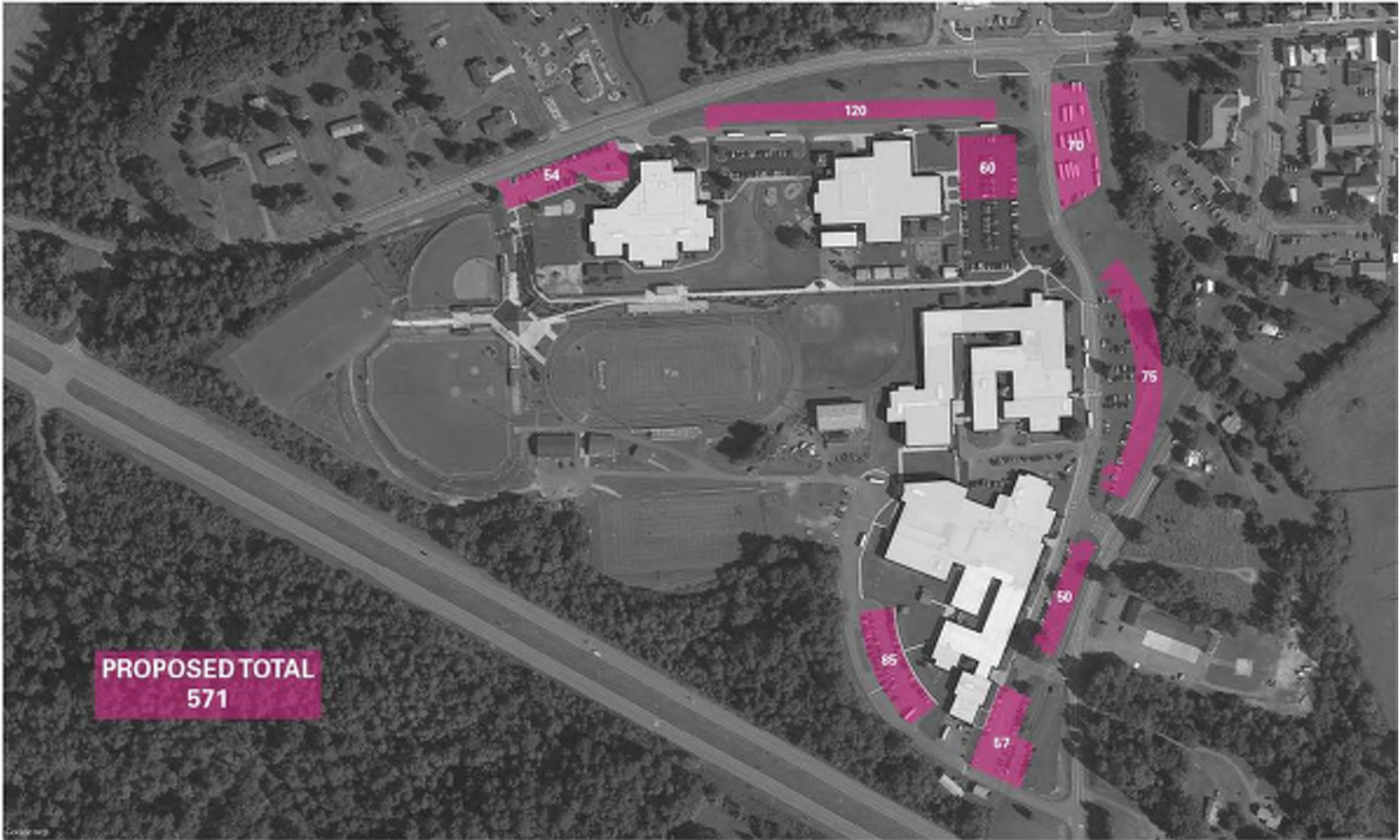


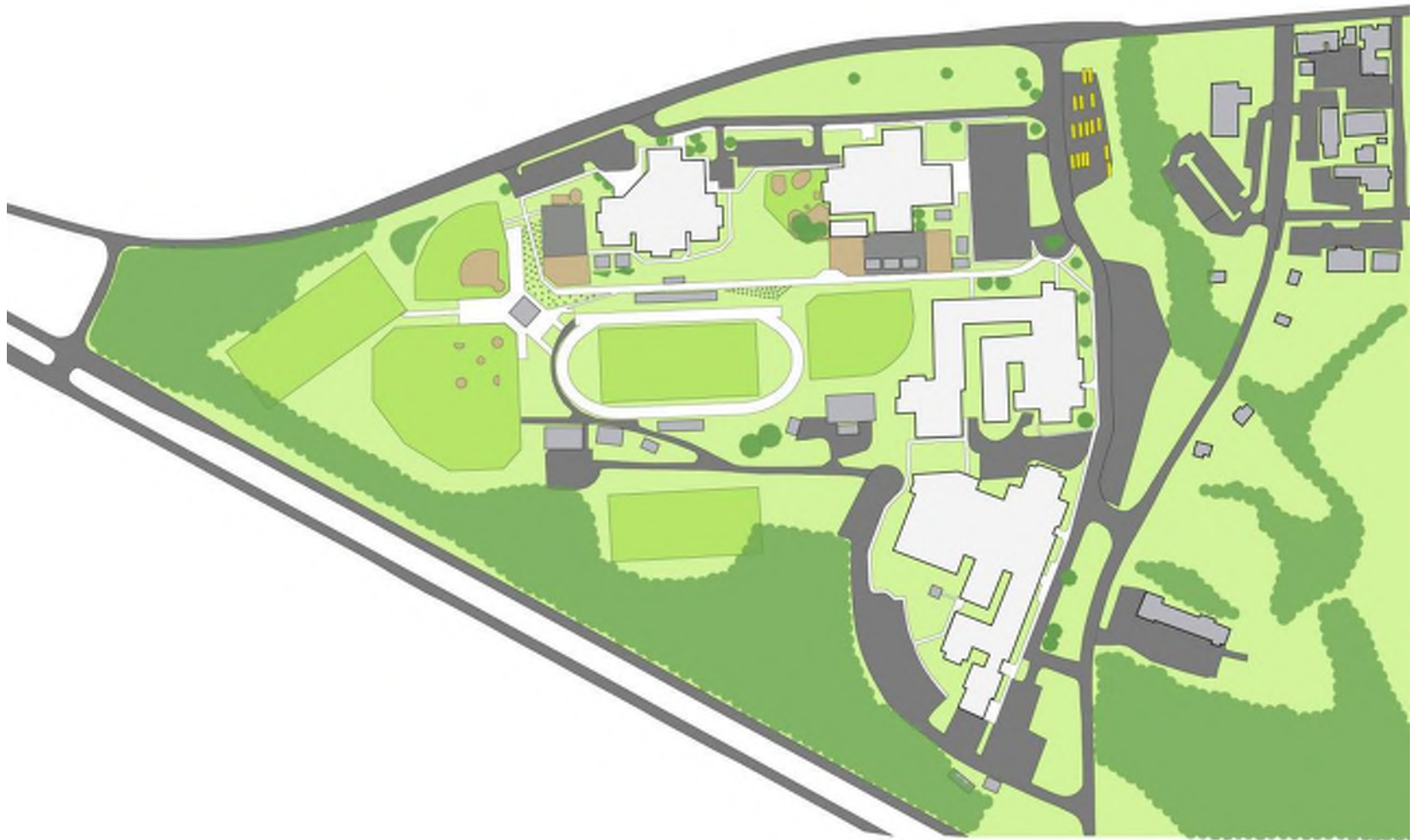










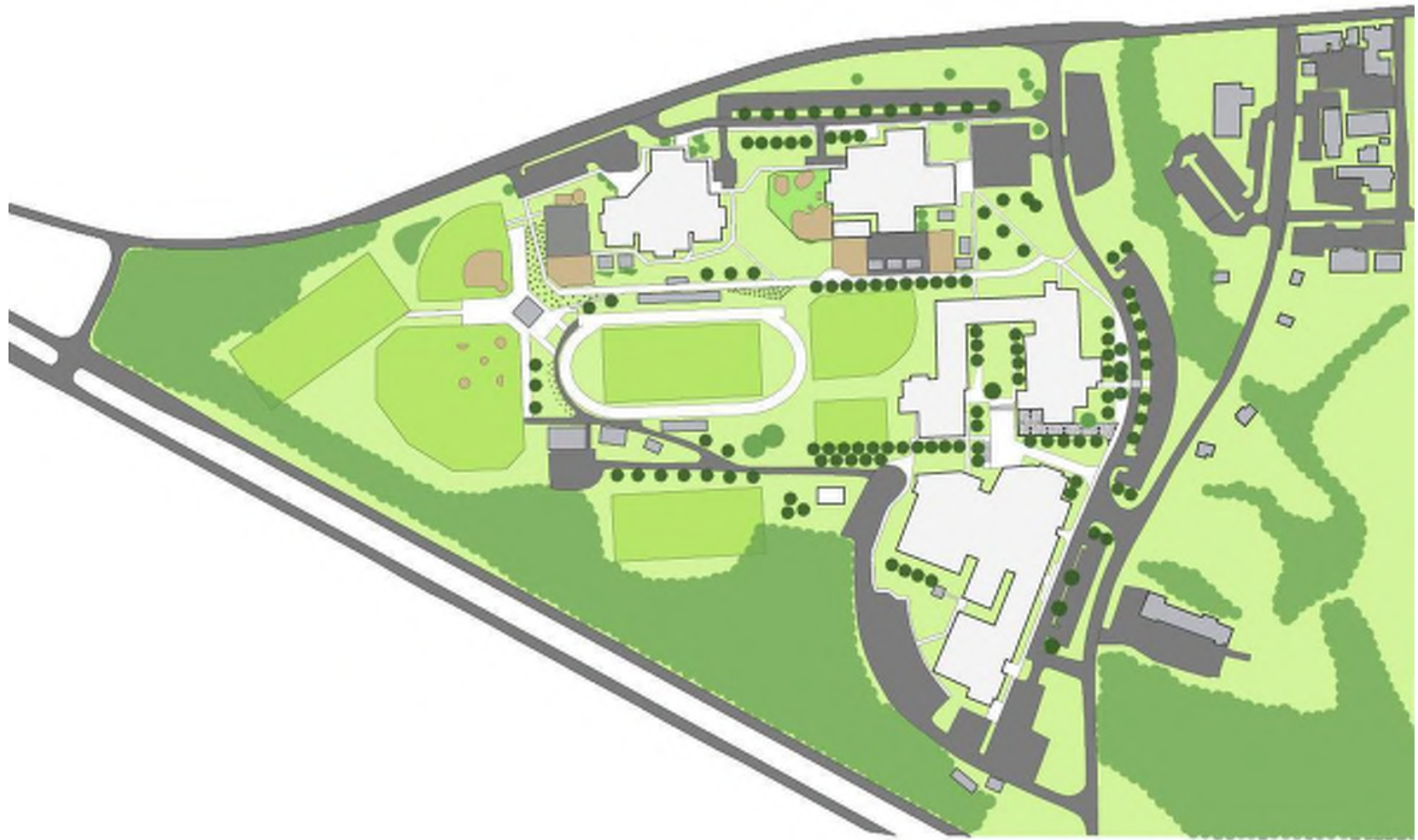


VMDO

02 Aug 2016

**CURRENT CAMPUS PLAN**

STANARDSVILLE CAMPUS













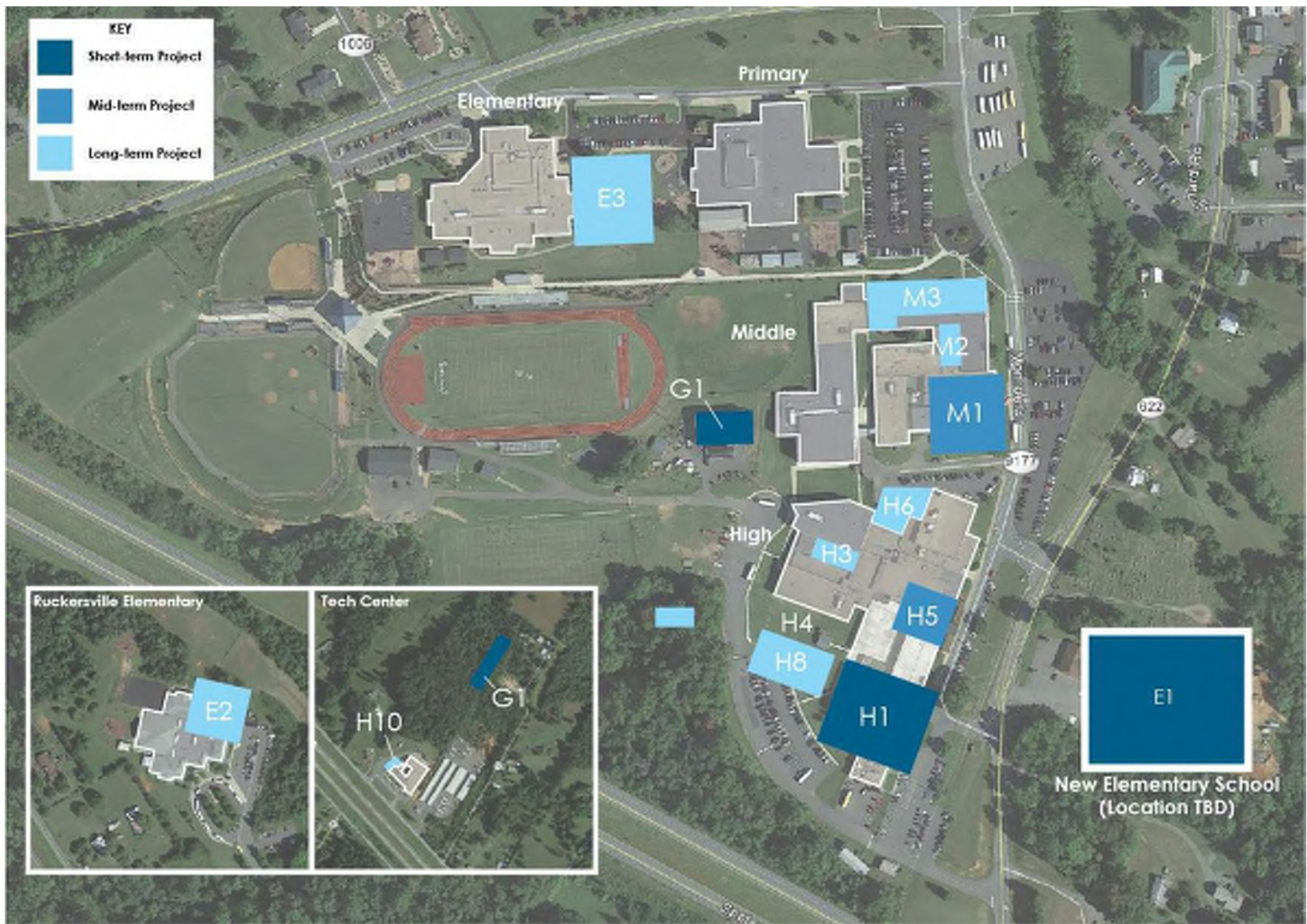


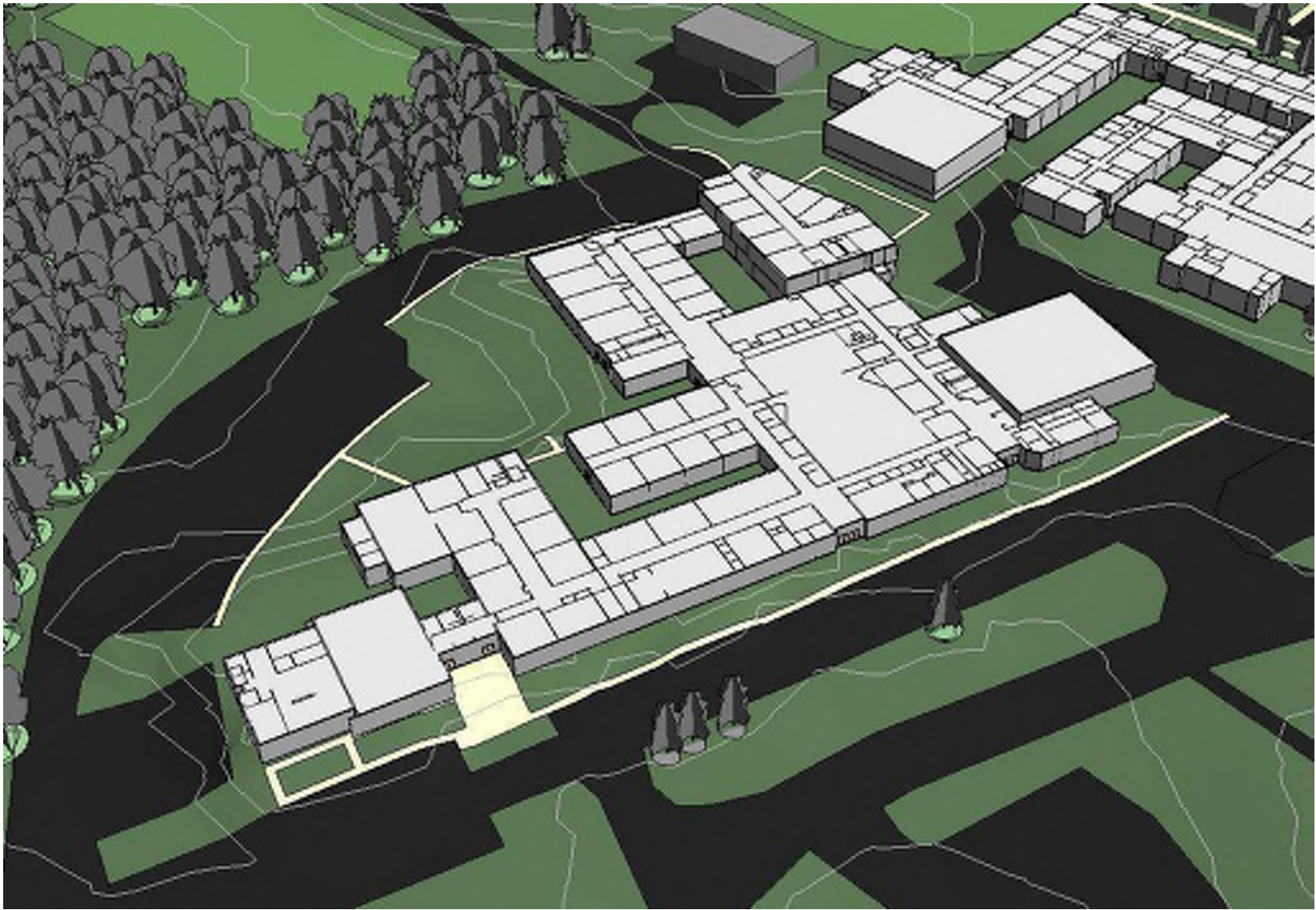


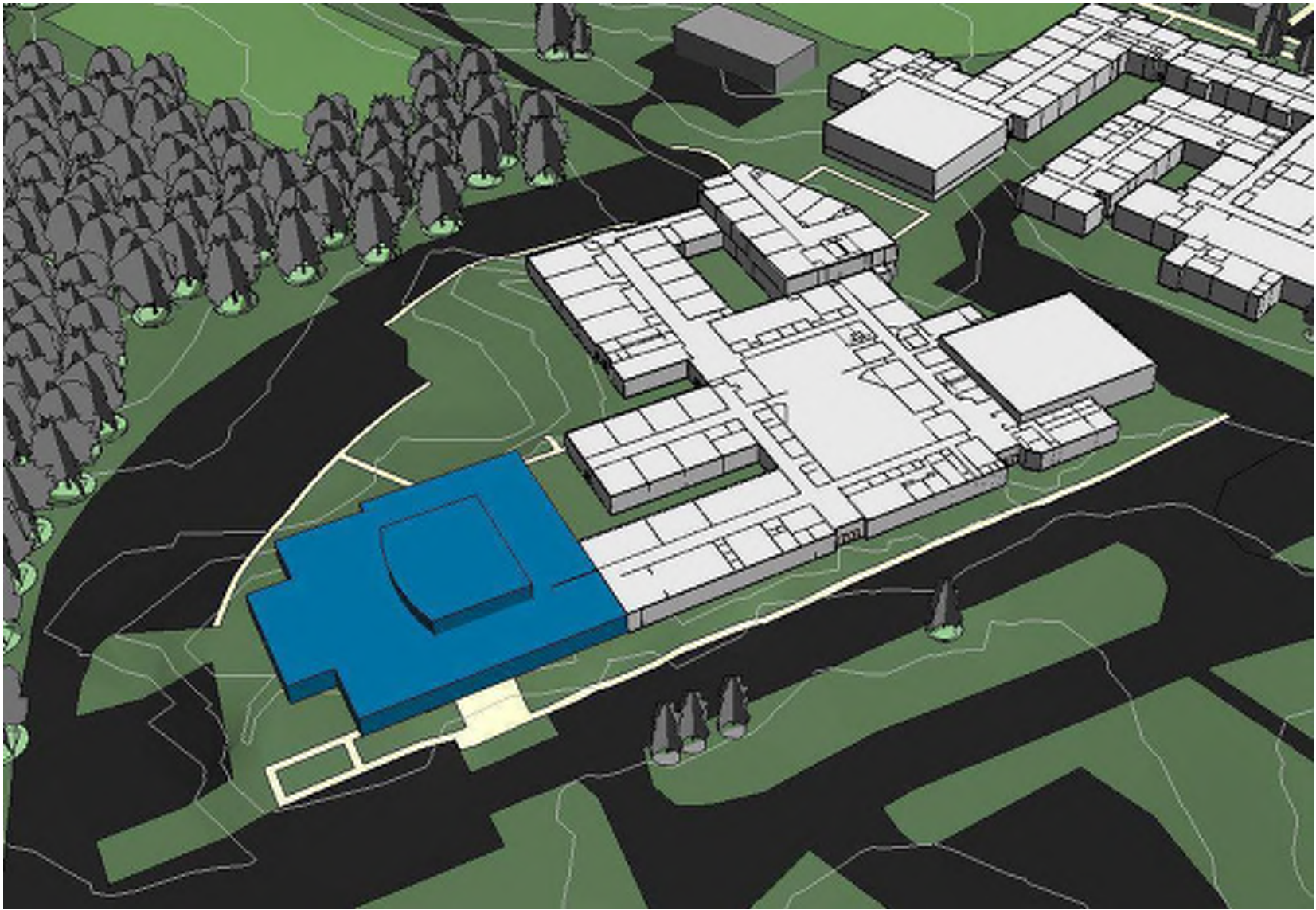


# PROJECT OPTIONS









VMDO

02 Aug 2016

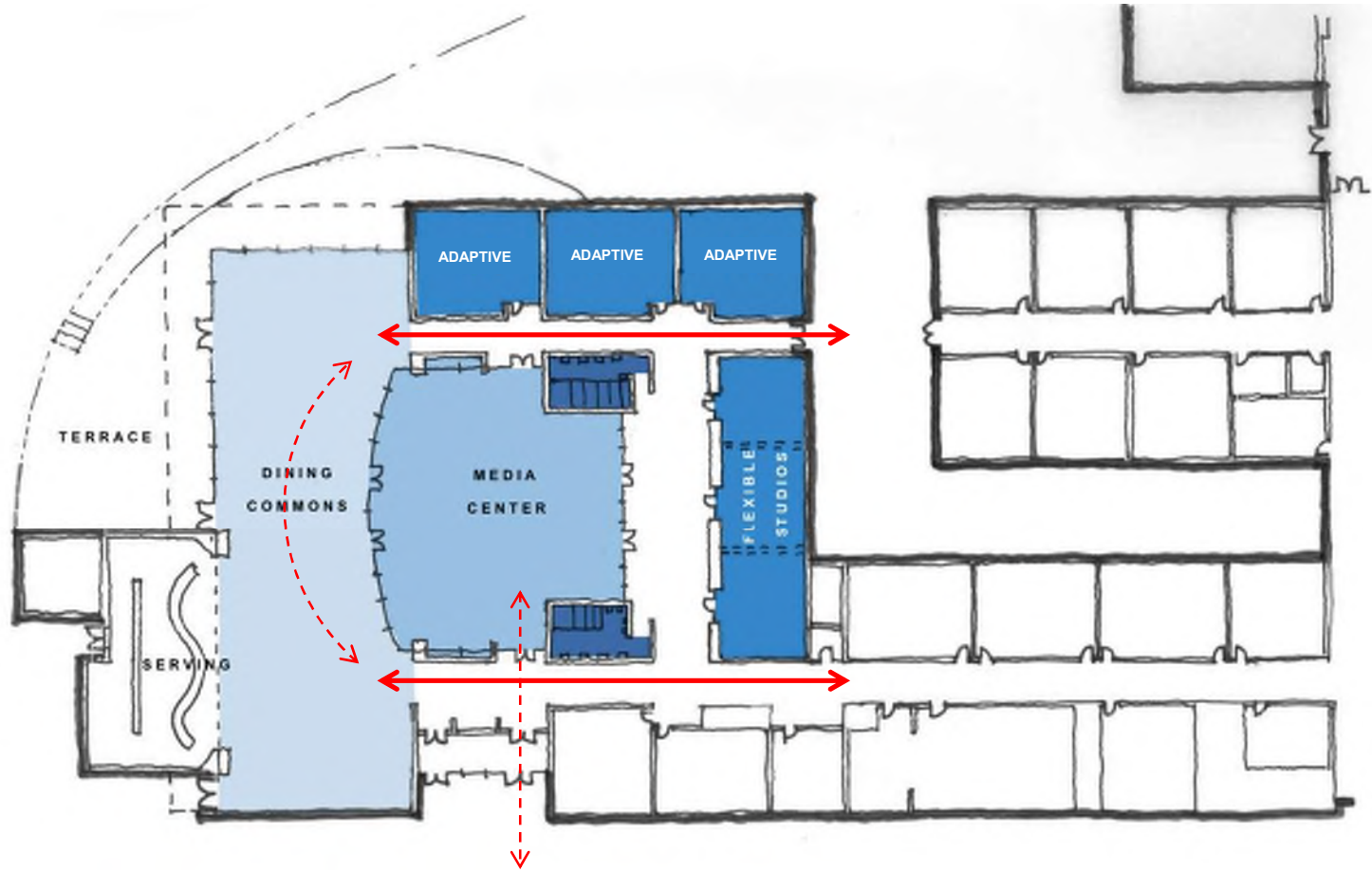
**William Monroe HIGH SCHOOL**

PROPOSED DINING/MEDIA CENTER RENOVATION/ADDITION



370 Seats Dining, 630 Seats Assembly  
 (340 fixed seats currently)





370 Seats Dining, 630 Seats Assembly  
 (340 fixed seats currently)



**VMDO**

02 Aug 2016

**VMDO PRECEDENT - DINING**

DISCOVERY ELEMENTARY | ARLINGTON, VA



VMDO

02 Aug 2016

**VMDO PRECEDENT - DINING**

BUCKINGHAM CO. ELEMENTARY | DILLWYN, VA

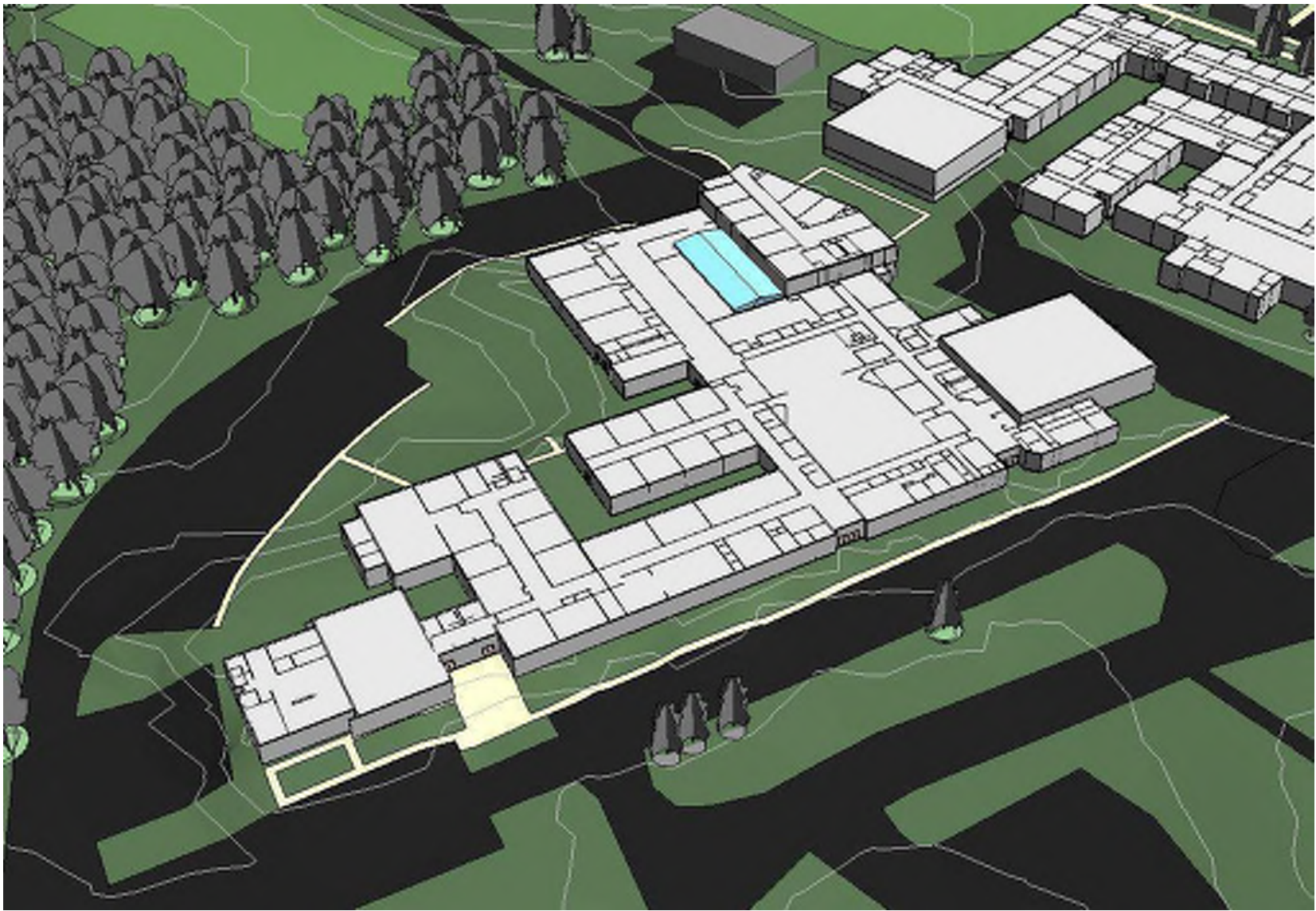


VMDO

02 Aug 2016

**VMDO PRECEDENT - DINING**

STOCKTON COLLEGE STUDENT CENTER | GALLOWAY, NJ



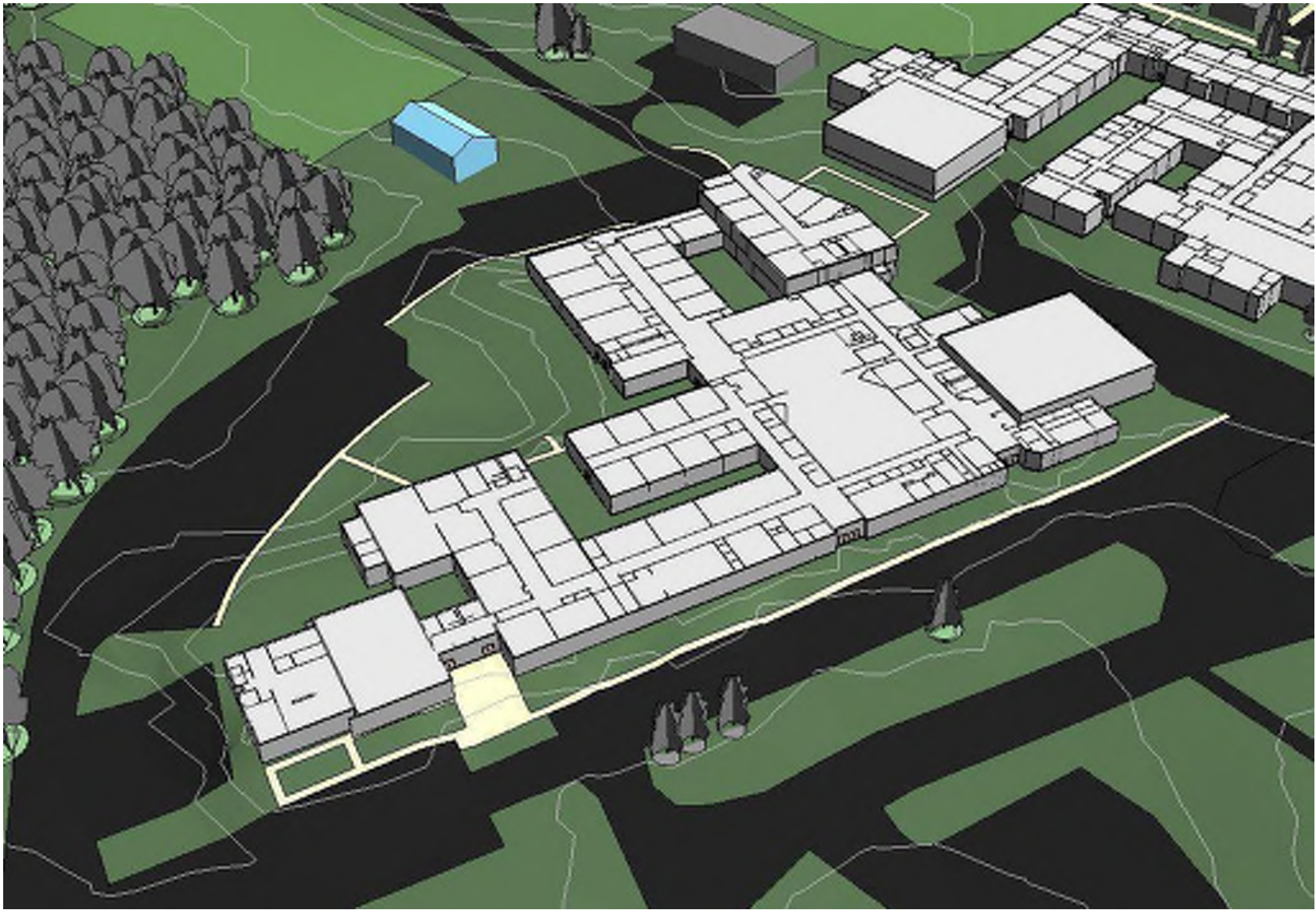


**VMDO**

02 Aug 2016

**VMDO PRECEDENT - INFILL**

JOHN HANDLEY HIGH SCHOOL | WINCHESTER, VA



VMDO

02 Aug 2016

**RELOCATE ENVIRONMENTAL SCIENCES**

HIGH SCHOOL



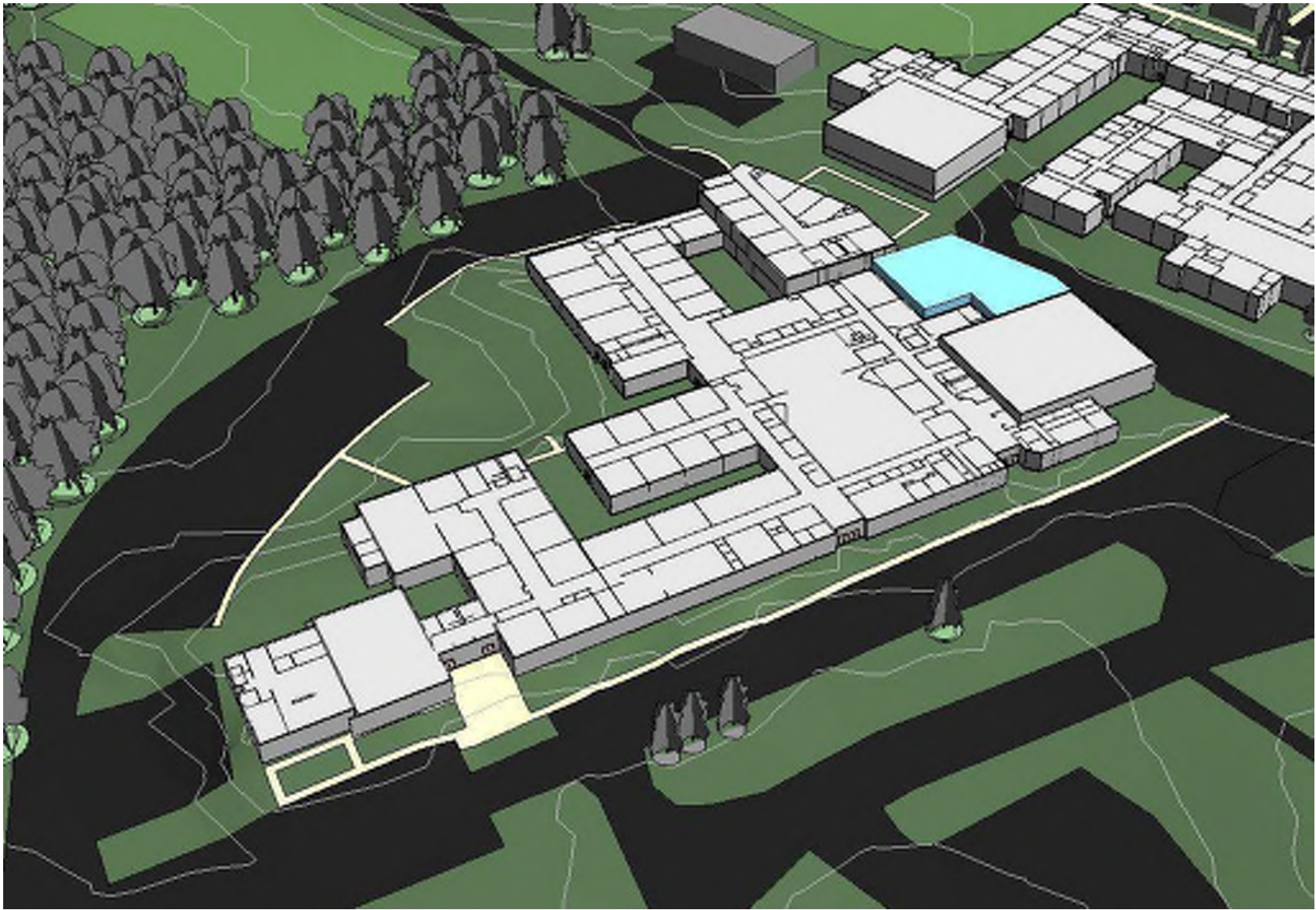
**VMDO**

02 Aug 2016

**VMDO PRECEDENT - ESA**

WESTERN ALBEMARLE HIGH | CROZET, VA



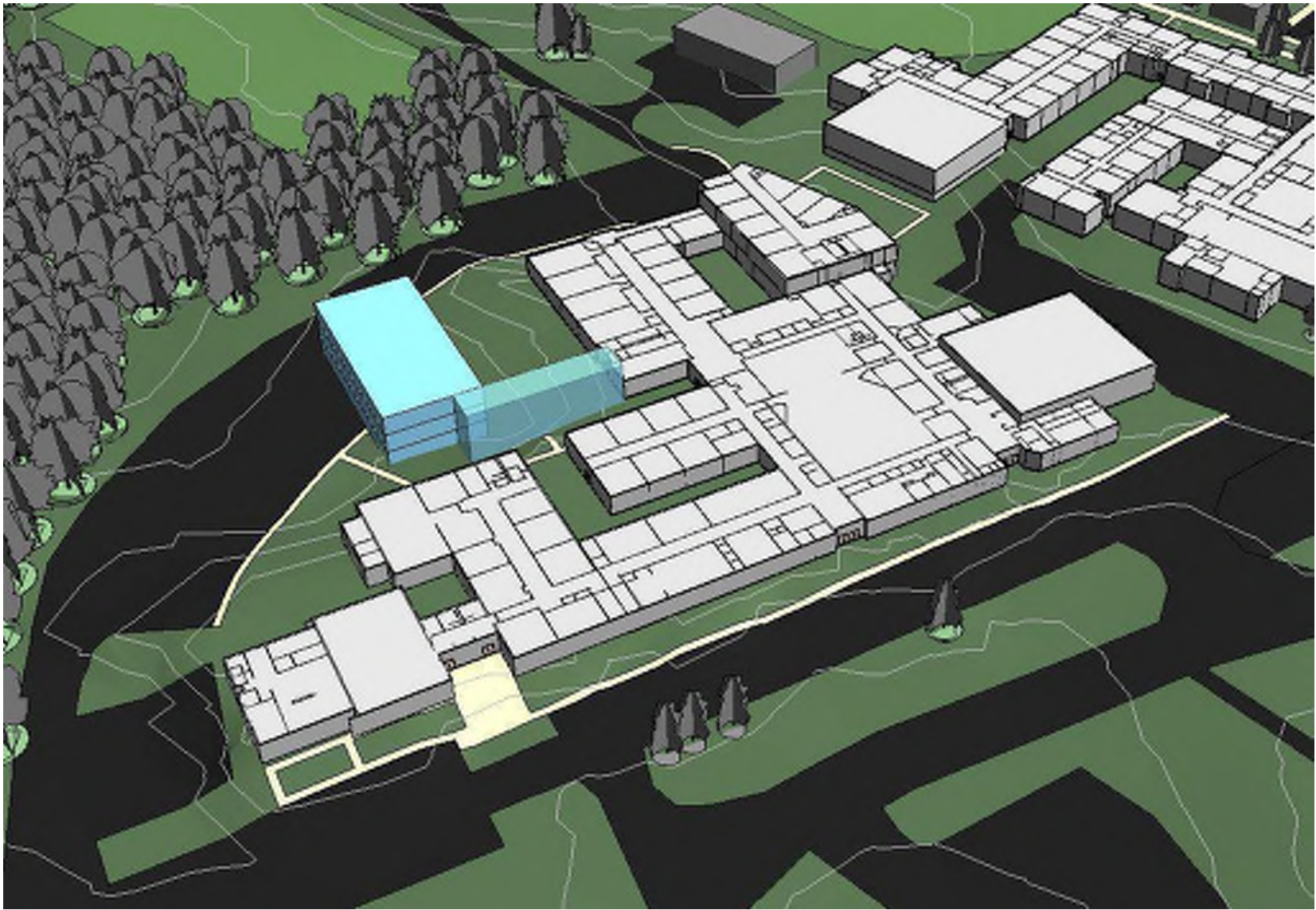


VMDO

02 Aug 2016

**AUXILIARY GYM ADDITION**

HIGH SCHOOL





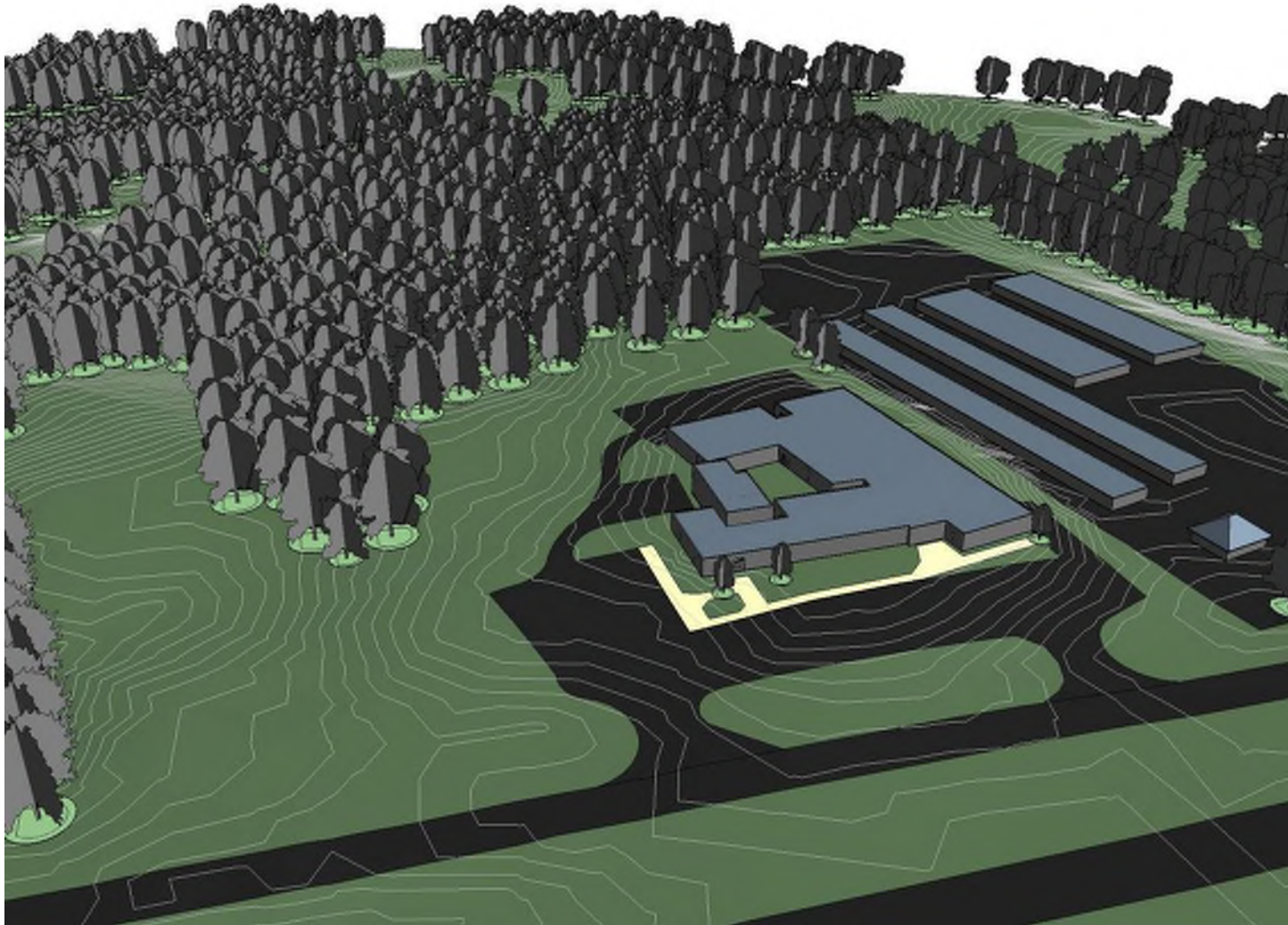
VMDO

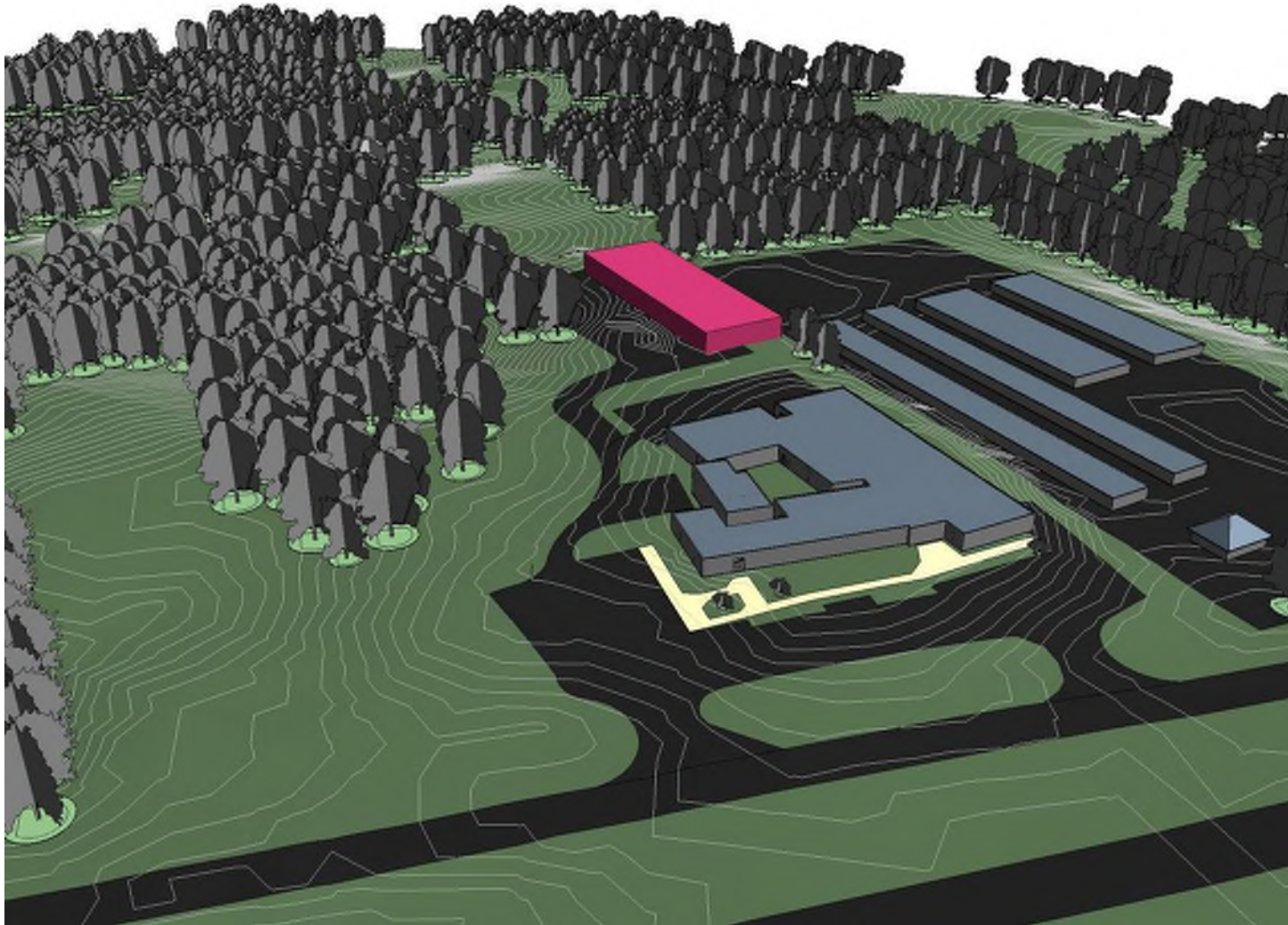
02 Aug 2016

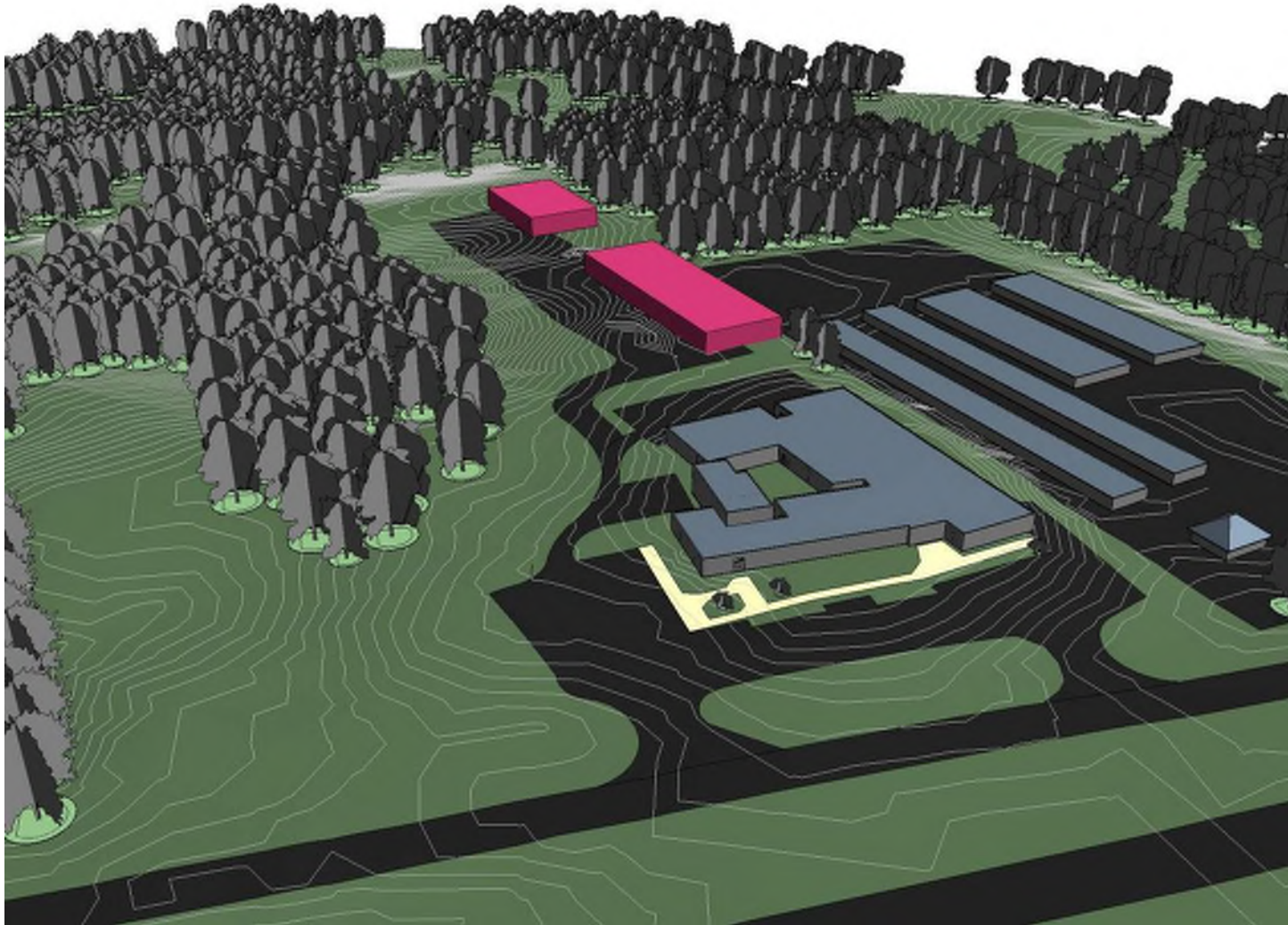
**CENTRAL OPERATIONS FACILITY**

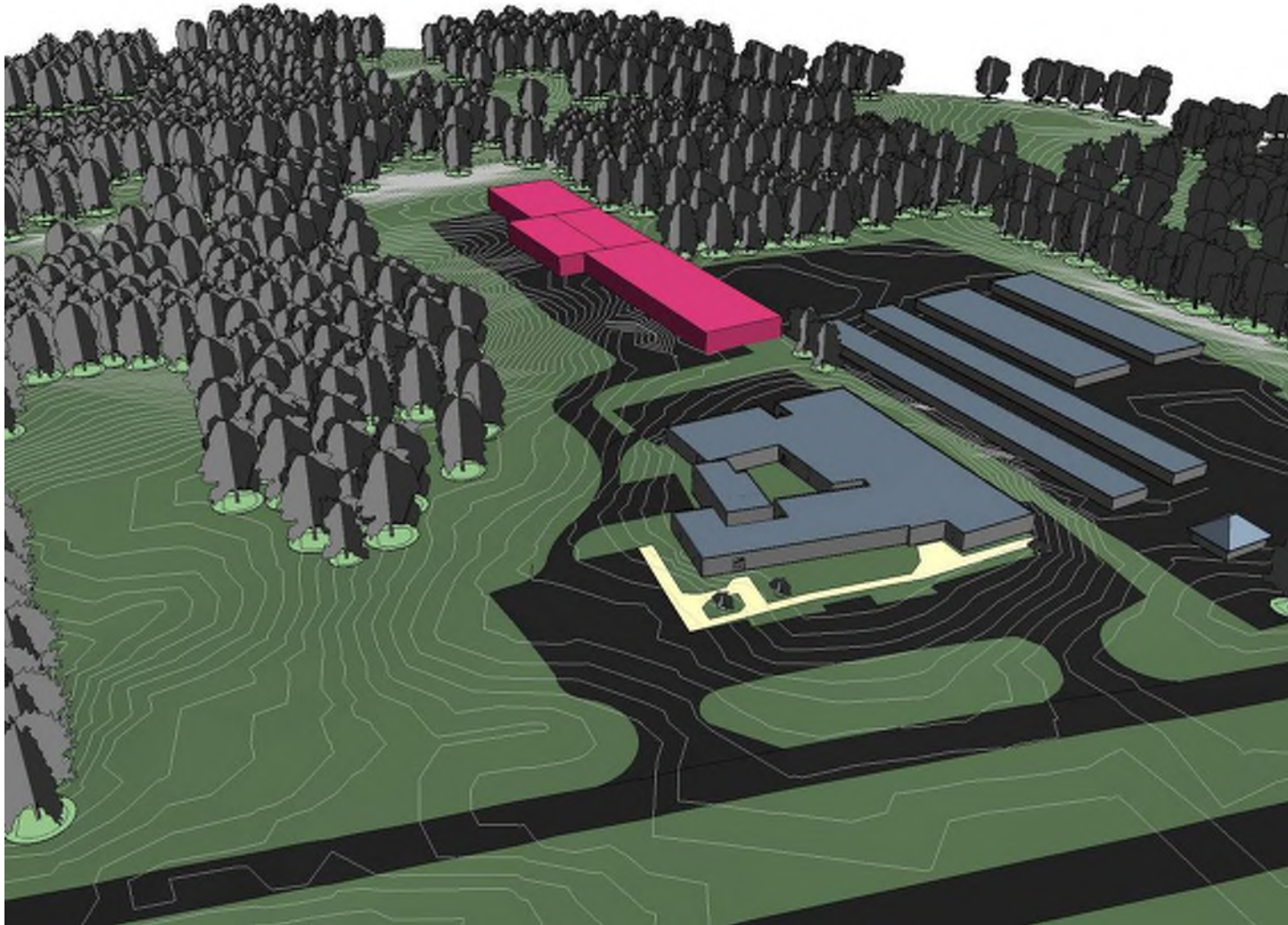
TECH CENTER



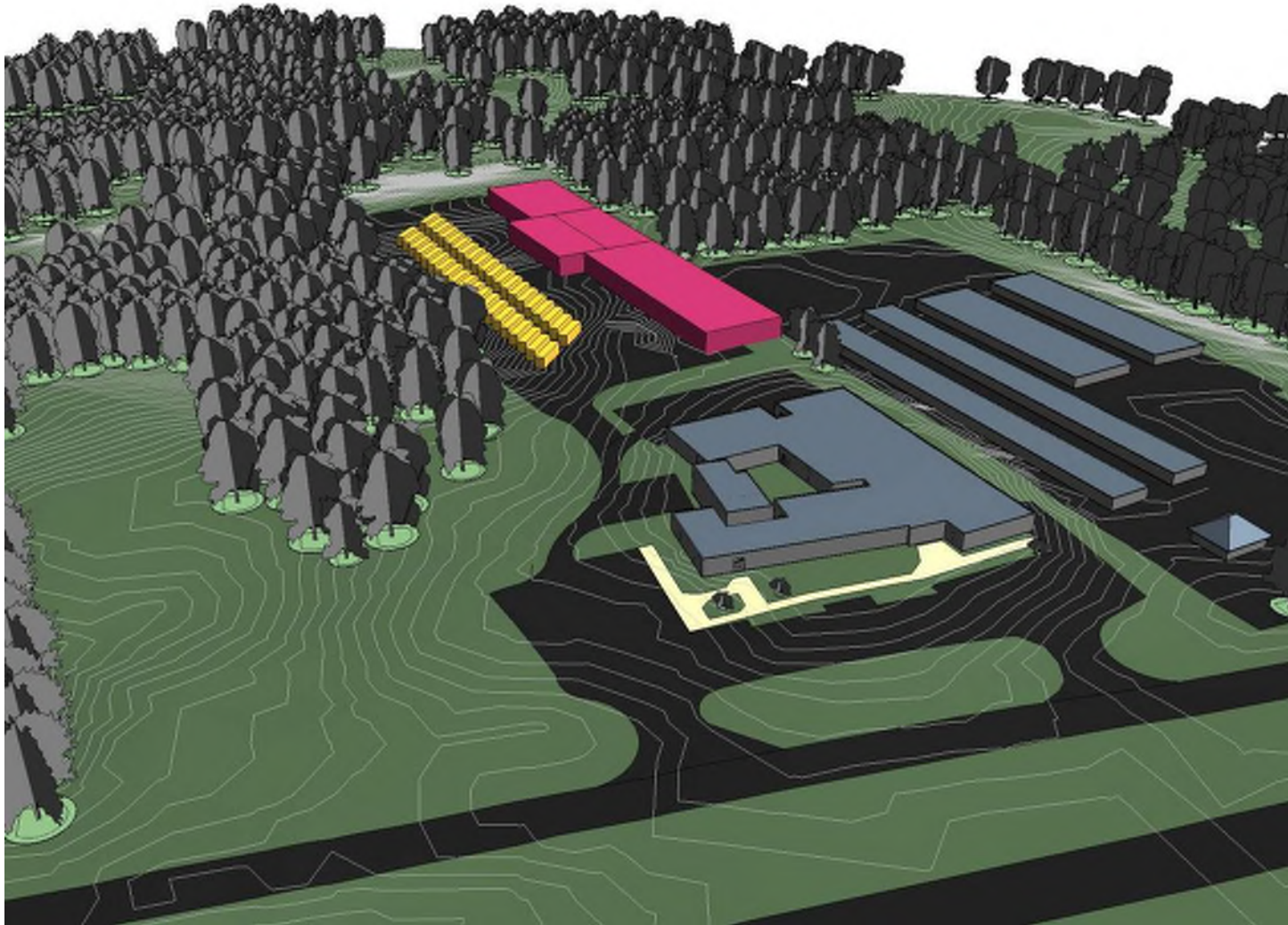


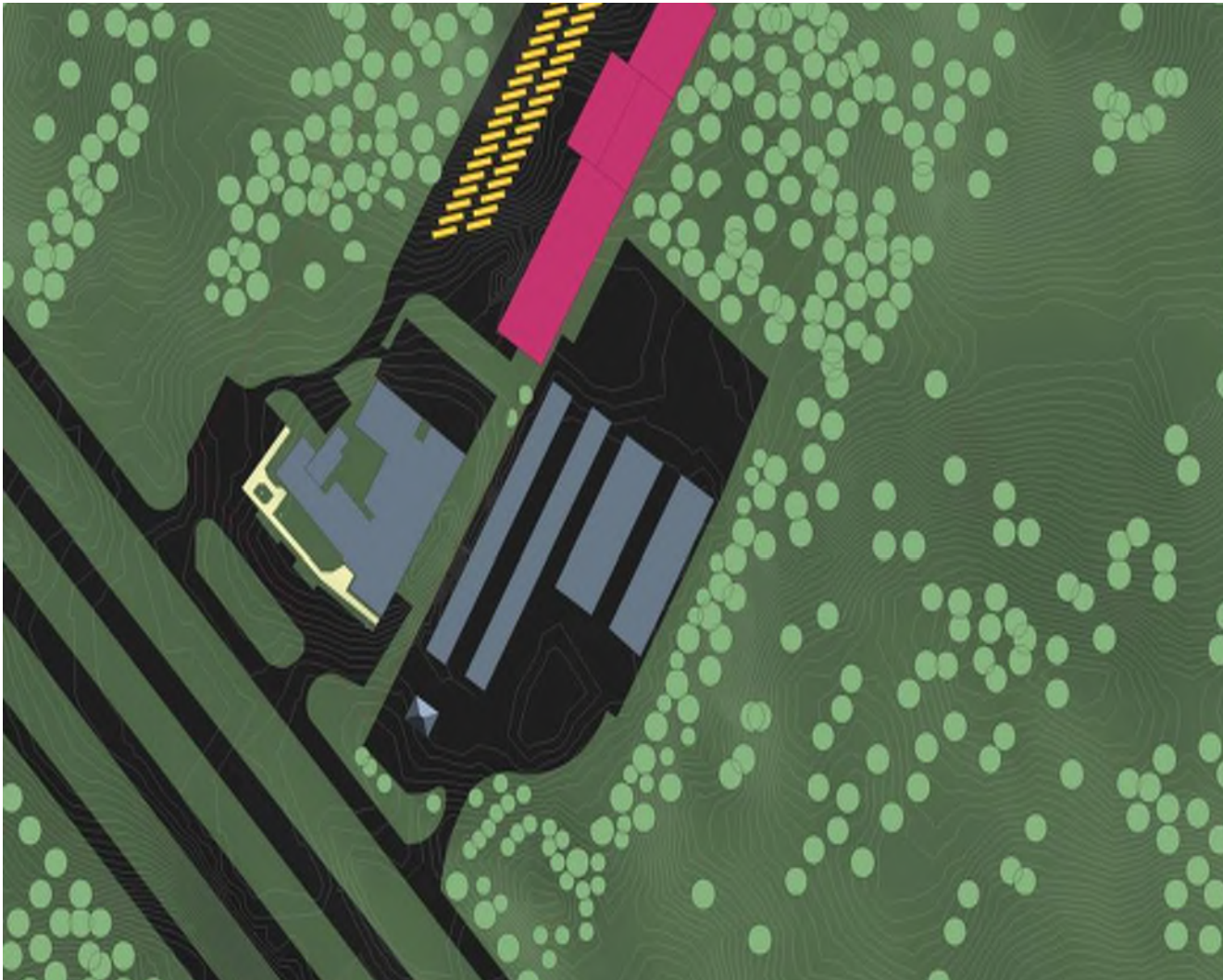










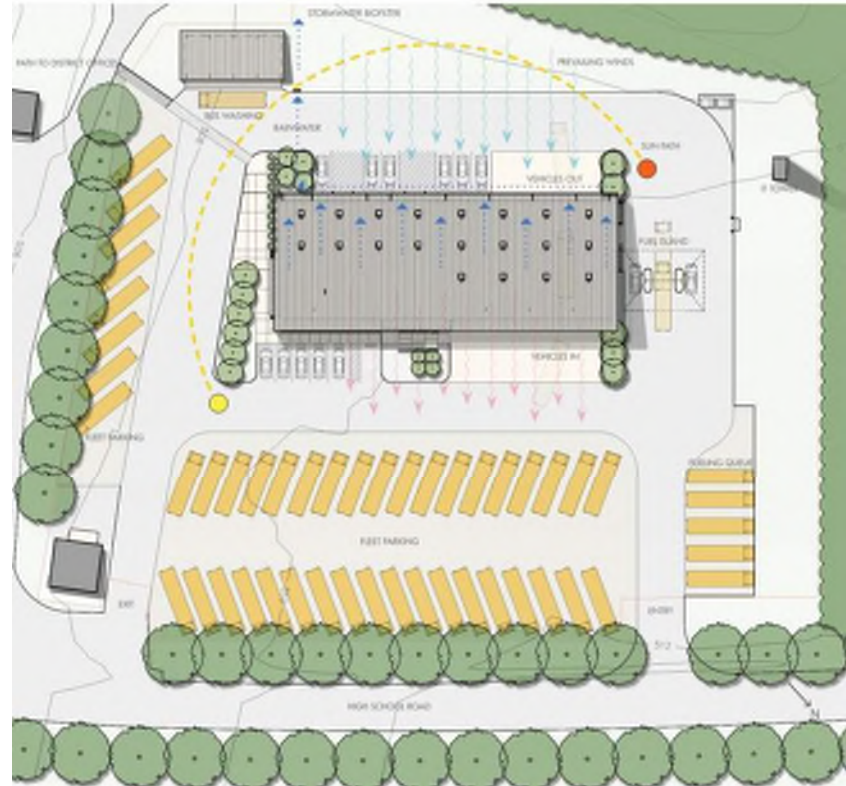


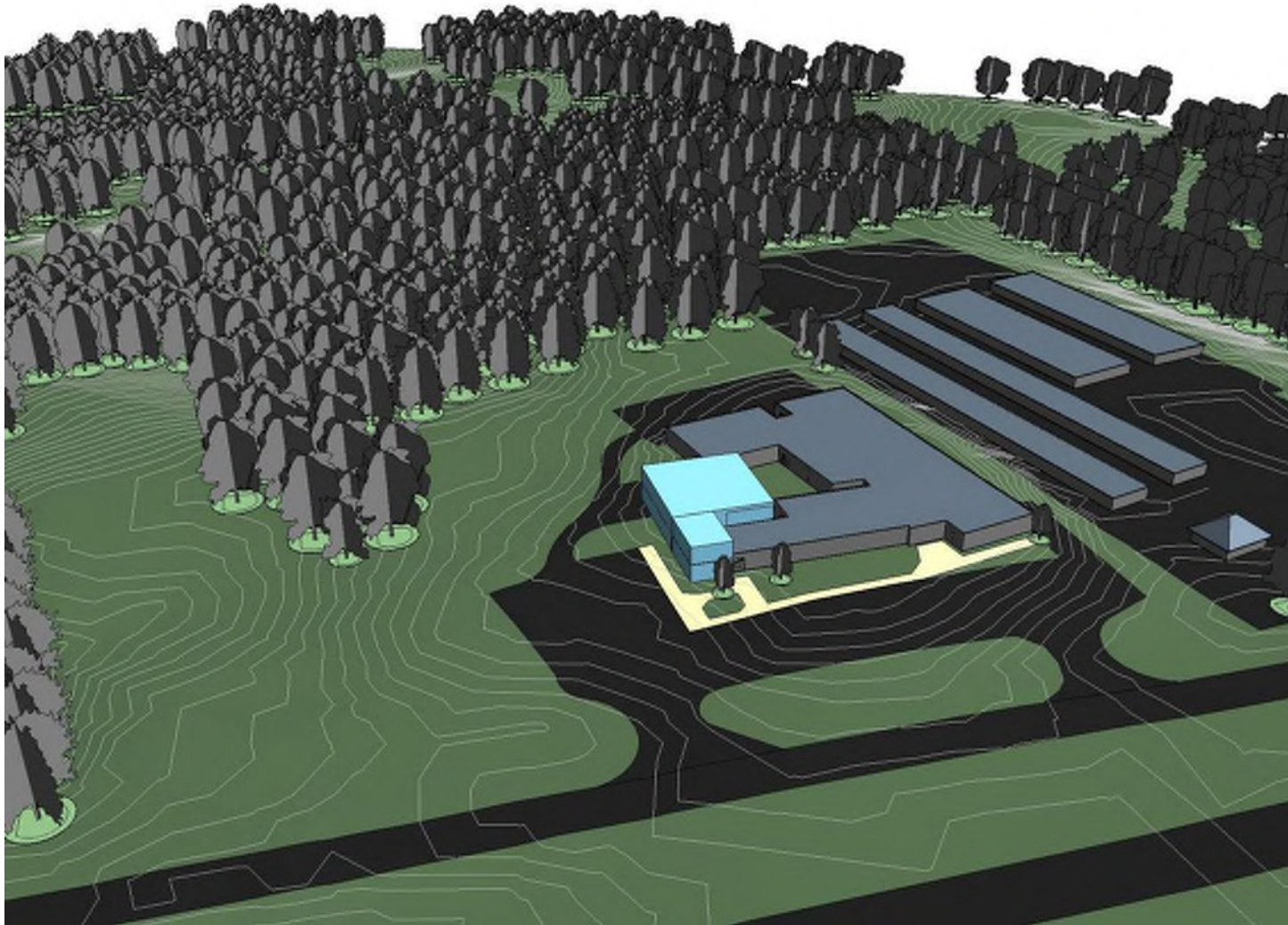
VMDO

02 Aug 2016

**CENTRAL OPERATIONS FACILITY**

TECH CENTER















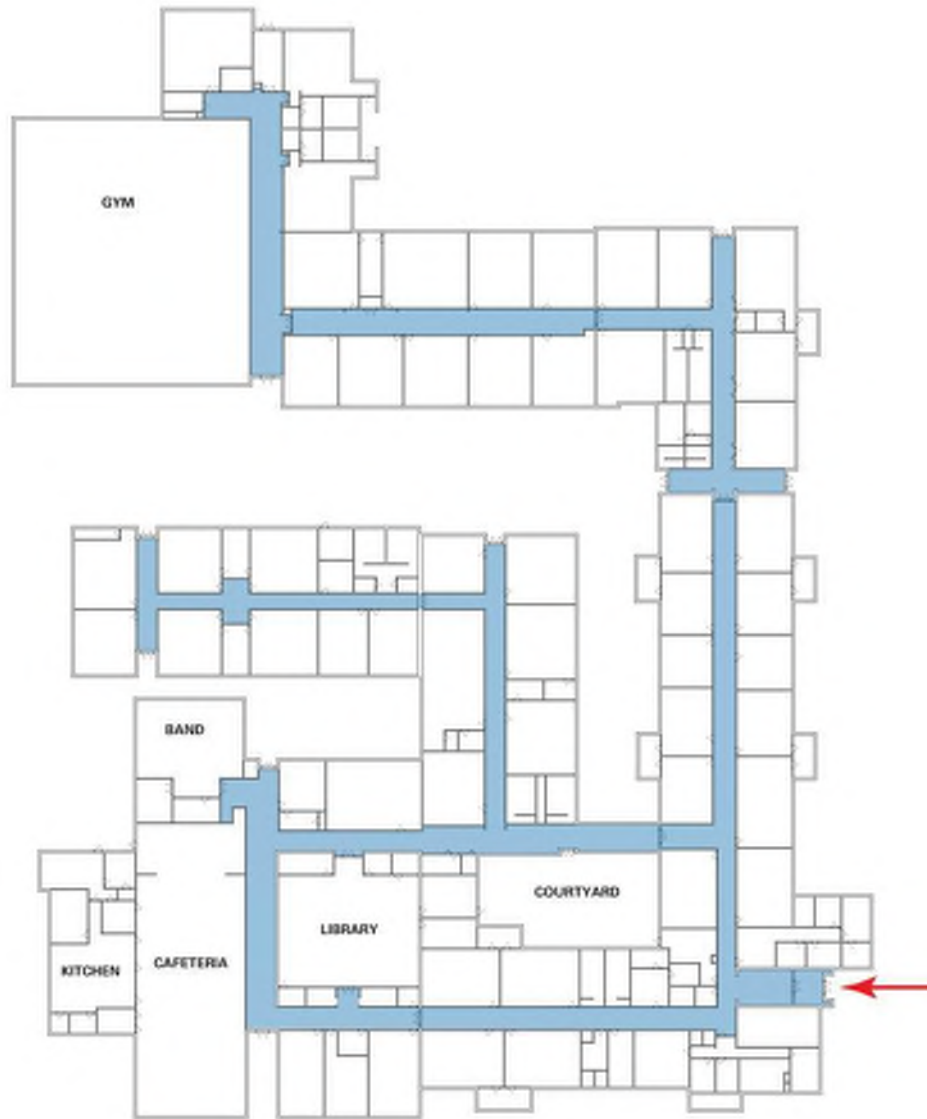


- 1 ENTRY & COMMONS
- 2 MEDIA CENTER
- 3 FALCON ROOM
- 4 MONUMENTAL STAIR
- 5 LEARNING HUB
- 6 NEW ACADEMIC WINGS
- 7 NEW COURTYARDS
- 8 EXISTING BUILDING

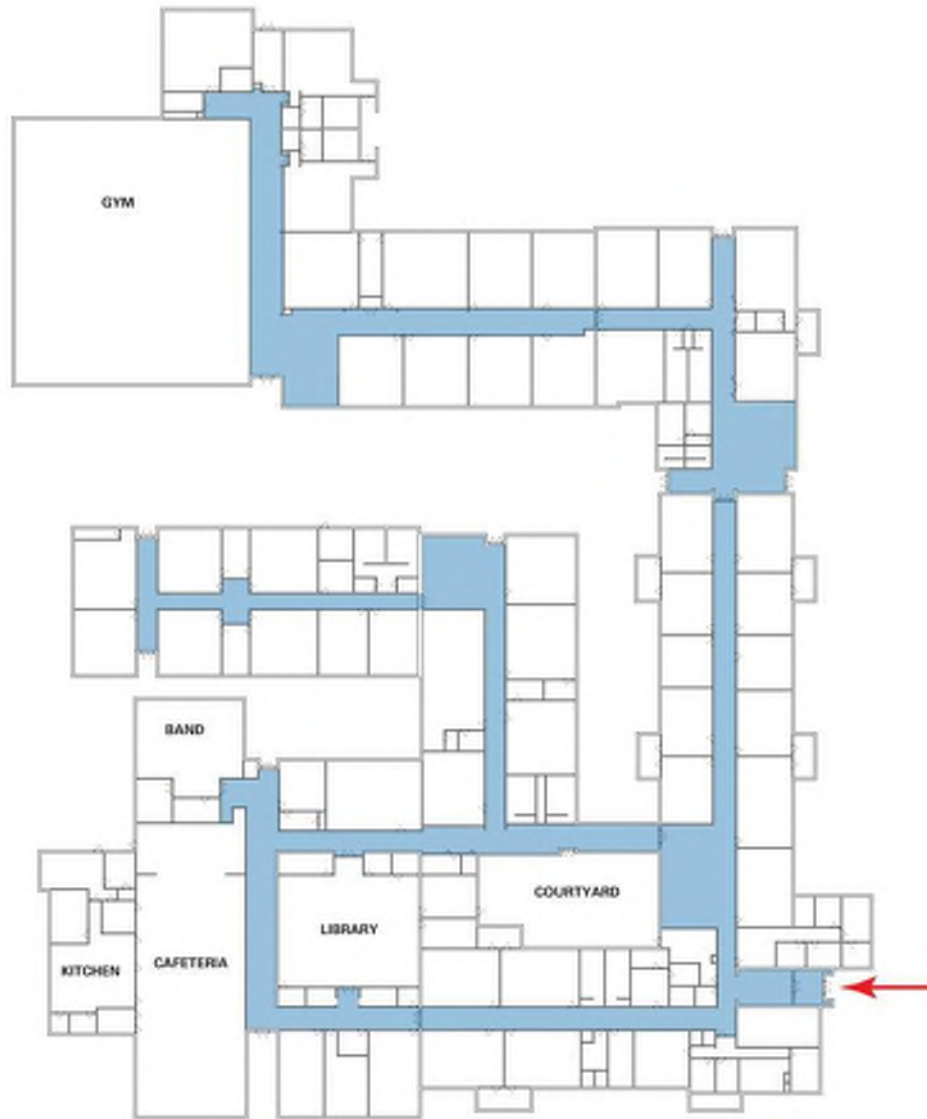
BUILDING SECTION







Scale: 1" = 40'



Scale: 1" = 40'



VMDO

02 Aug 2016

**VMDO PRECEDENT- BREAKOUT SPACES**

FAUQUIER HIGH | WARRENTON, VA



VMDO

02 Aug 2016

**VMDO PRECEDENT- BREAKOUT SPACES**

FAUQUIER HIGH | WARRENTON, VA



VMDO

02 Aug 2016

**VMDO PRECEDENT- BREAKOUT SPACES**

BUCKINGHAM ELEMENTARY | DILLWYN, VA





VMDO

02 Aug 2016

**VMDO PRECEDENT- BREAKOUT SPACES**

BUCKINGHAM ELEMENTARY | DILLWYN, VA

DATE ?  
LOCATION ?  
SIZE ?



# NEXT STEPS



- **Obtain public input**
- **School Board Meeting – Aug 10<sup>th</sup>**
  - Present summary of findings + analysis
  - Obtain a sense of priority, interest, feasibility
  - VMDO to refine project options to recommendations
- **School Board Meeting – Sept 7<sup>th</sup>**
  - Present recommendations to Board
  - Obtain final comments
- **School Board Meeting – Oct 5<sup>th</sup>**
  - Provide final report + recommendations
  - Provide estimated timeline for projects
  - Provide cost estimates for recommended projects

V M D O